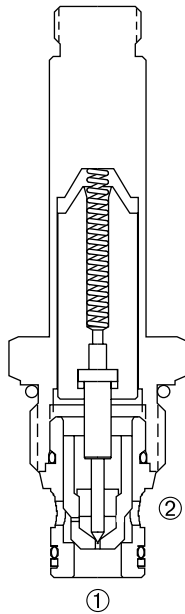


DSV2-100

Normally-Closed, Two-Way, Two-Position, Pilot-Operated Cartridge Solenoid Valve



DESCRIPTION

A cartridge valve designed with positive shut off to be used in load holding applications.

OPERATION

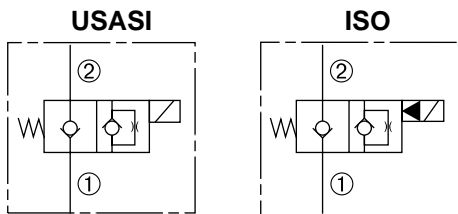
When de-energized, the DSV2-100 acts as a check valve, allowing flow from ① to ②, while blocking flow from ② to ①.

When energized, the poppet lifts to open the ② to ① flow path.

Operation of Manual Override Option: To override, push button in, twist counterclockwise and release. In this position, valve will remain open in a detented condition.

To return to normal operation, push button in, twist clockwise and release. Override will be detented in this position.

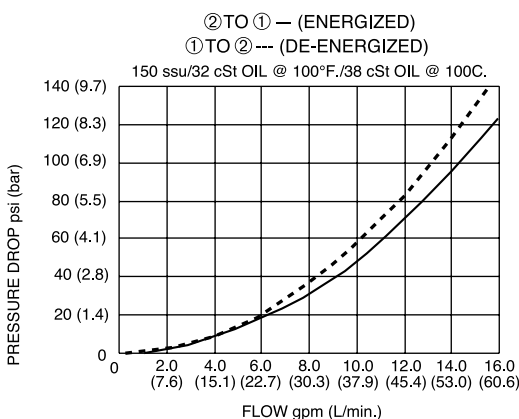
SYMBOLS



FEATURES and BENEFITS

- Continuous-duty solenoid.
- Hardened poppet and plunger for long life and low leakage.
- Efficient wet-armature construction.
- Cartridges are voltage interchangeable.
- Optional coil voltages and terminations.
- Filter screen standard.
- Manual override option.
- Industry common cavity.
- Compact size.

PRESSURE DROP VS. FLOW



SPECIFICATIONS

Operating Pressure: 3000 PSI (207 Bar)
Flow: See PRESSURE DROP VS. FLOW graph.
Internal Leakage: 5 drops/min. max. at 3000 PSI (207 Bar)
Temperature: -30° F to +250° F (-35°C to +120° C)
Coil Rating: Continuous from 85% to 110% of rated voltage.
Current Draw: 12 VDC is 1.7 amps.
Minimum Pull-In Voltage: 85% of rated voltage at 3000 PSI (207 Bar)
Response Time: 80% of final change of state with 100% voltage supplied at 100% of nominal flow rating.

Pull-In: 12 VDC 100 m. sec.

Drop-Out: 12 VDC 180 m. sec.

Recommended Filtration: Critical Application-ISO 16/12
 Non-Critical Application-ISO 19/15

Fluids: Mineral-based fluids.

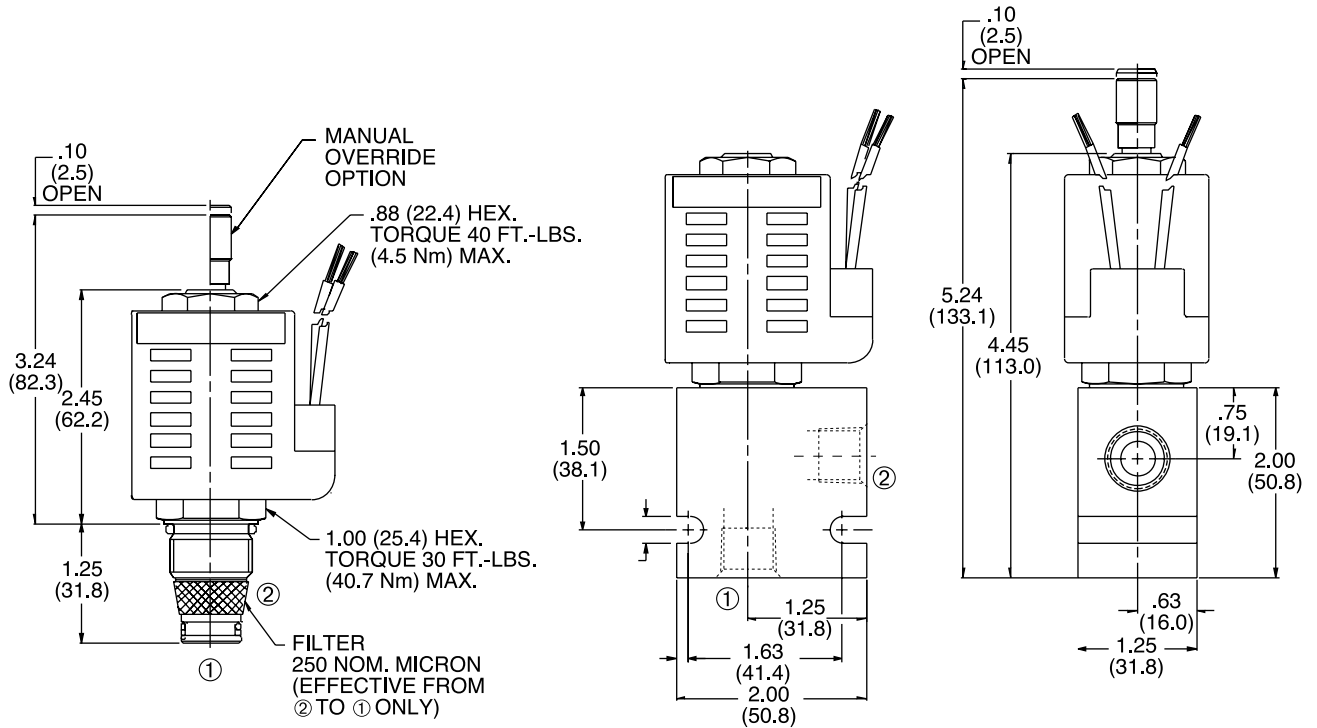
For other fluid compatibility consult factory.

Cavity: 100-2, see page 0.21.

Cavity Tool: See page 0.21.

Body Material: Anodized 6061T6 aluminum alloy rated at 3000 PSI (207 Bar).

INSTALLATION DIMENSIONS



() Parentheses = Millimeters

HOW TO ORDER

