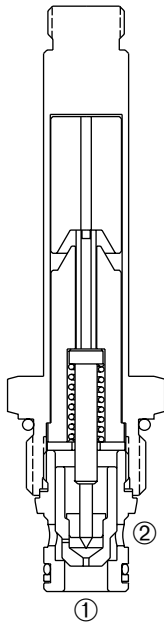


DSV2-100

Normally-Open, Two-Way, Two-Position, Poppet-Type Cartridge Solenoid Valve



DESCRIPTION

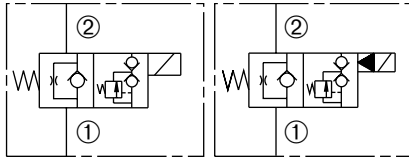
A cartridge valve designed with positive shut off, low leakage, to be used in load holding applications.

OPERATION

When de-energized, the DSV2-100 poppet is open to allow flow from ② to ①.

When energized, the poppet closes to block flow from ② to ①. In this condition, the cartridge allows reverse flow from ① to ② after overcoming the solenoid force - 50 PSI (3 Bar).

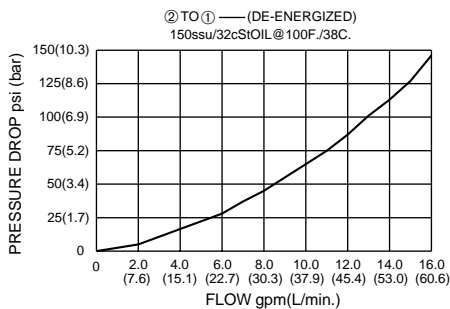
SYMBOLS



FEATURES and BENEFITS

- Continuous-duty solenoid.
- Hardened poppet and plunger for long life and low leakage.
- Efficient wet-armature construction.
- Cartridges are voltage interchangeable.
- Optional coil voltages and terminations.
- Filter screen standard.
- Industry common cavity.
- Compact size.

PRESSURE DROP VS. FLOW



SPECIFICATIONS

Operating Pressure: 3000 PSI (207 Bar)

Flow: See PRESSURE DROP VS. FLOW graph.

Internal Leakage: 5 drops/min. max. at 3000 PSI (207 Bar)

Temperature: -30° F to +250° F (-35°C to +120° C)

Coil Rating: Continuous from 85% to 110% of rated voltage.

Current Draw: 12 VDC is 1.7 amps.

Minimum Pull-In Voltage: 85% of rated voltage at 3000 PSI (207 Bar)

Response Time: 80% of final change of state with 100% voltage supplied at 100% of nominal flow rating.

Pull-In: 12 VDC 25 m. sec.

Drop-Out: 12 VDC 30 m. sec.

Recommended Filtration: Critical Application-ISO 16/12

Non-Critical Application-ISO 19/15

Fluids: Mineral-based fluids.

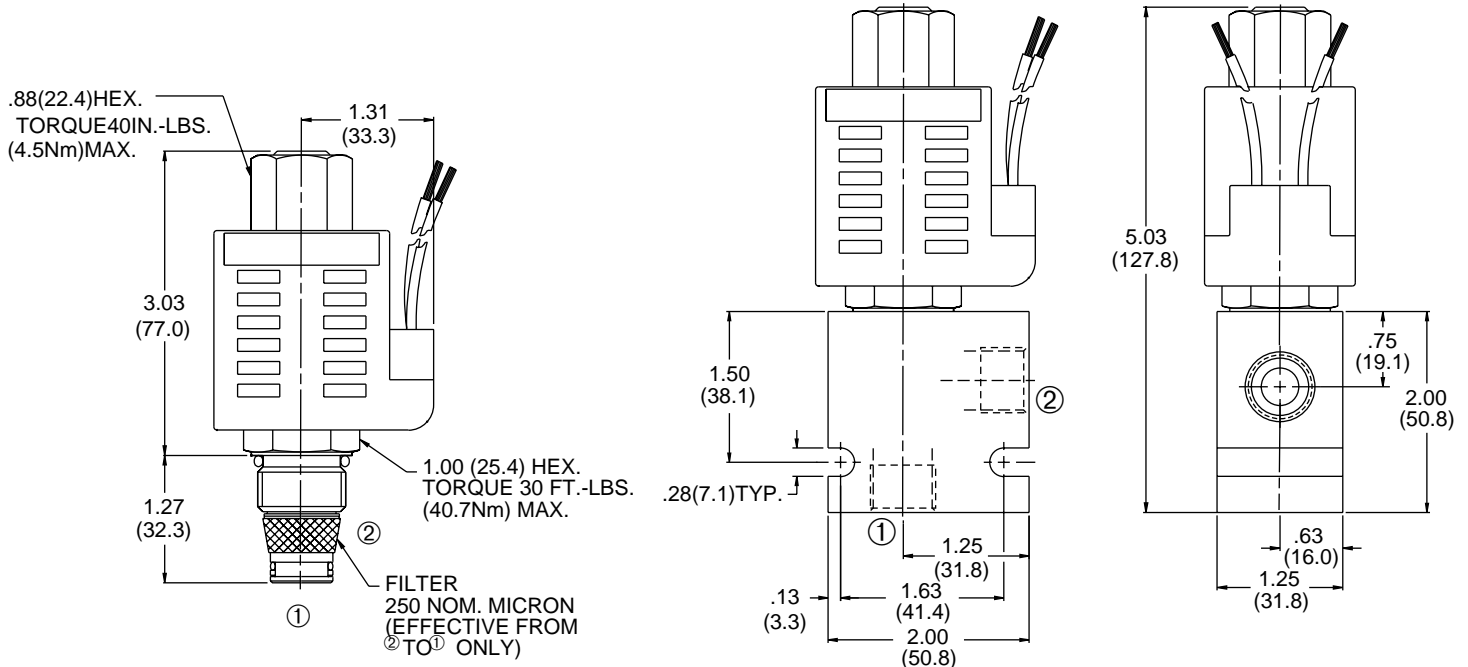
For other fluid compatibility consult factory.

Cavity: 080-2, see page 0.21.

Cavity Tool: See page 0.21.

Body Material: Anodized 6061T6 aluminum alloy rated at 3000 PSI (207 Bar).

INSTALLATION DIMENSIONS



() Parentheses = Millimeters

HOW TO ORDER

