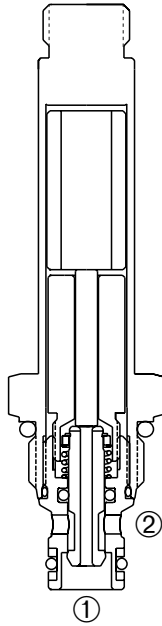


DSV-080

Normally-Closed, Two-Way, Two-Position, Bi-Directional Cartridge Solenoid Valve



DESCRIPTION

A cartridge valve designed with positive shut off, low leakage, blocking in both directions, to be used in load holding applications.

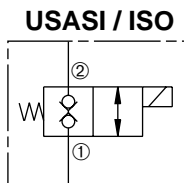
OPERATION

When de-energized, the DSV-080 blocks flow in both directions.

When energized, the poppet shifts to allow flow in either direction.

Operation of Manual Override Option: To override, push button in to activate. To return to normal valve function, release button.

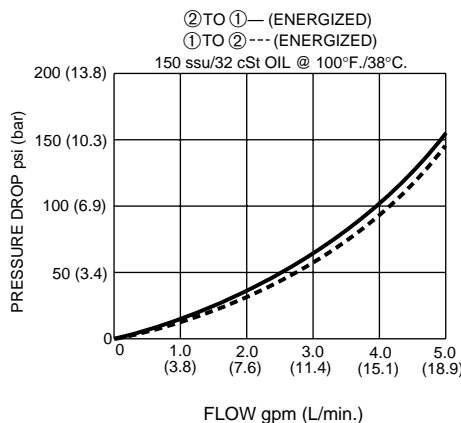
SYMBOL



FEATURES and BENEFITS

- Continuous-duty solenoid.
- Hardened poppet and seat for long life and low leakage.
- Efficient wet-armature construction.
- Cartridges are voltage interchangeable.
- Optional coil voltages and terminations.
- Manual override option.
- Zero leak valve available.
- Industry common cavity.
- Compact size.

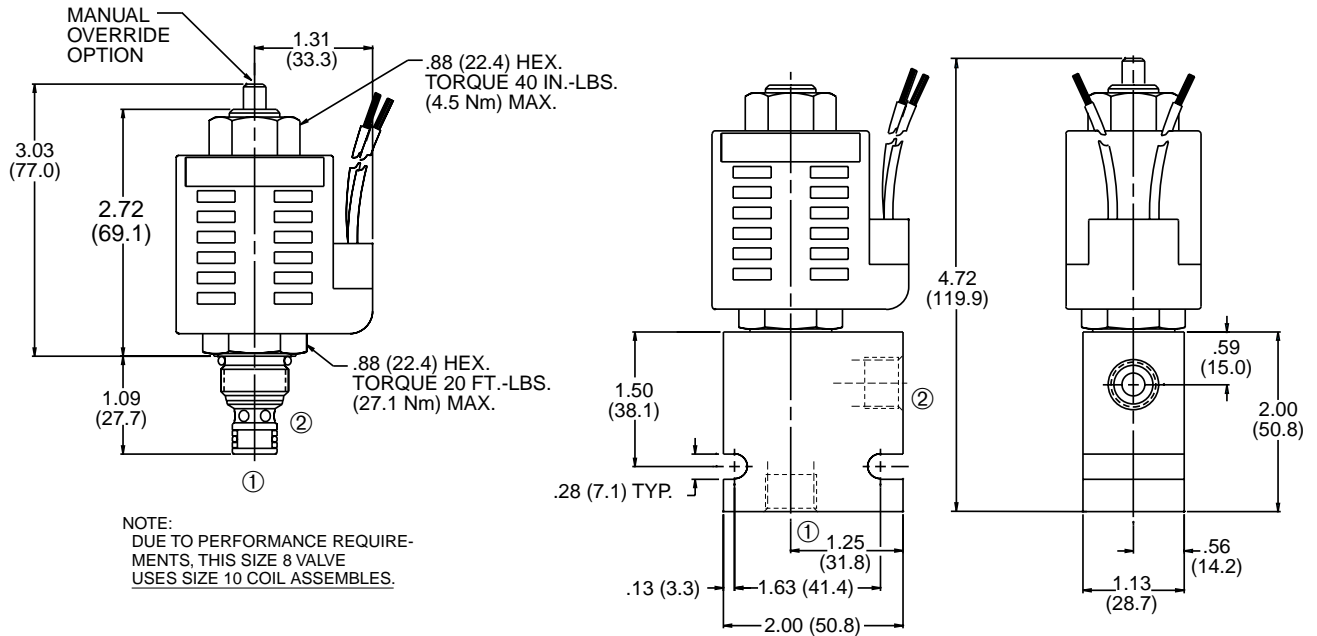
PRESSURE DROP VS. FLOW



SPECIFICATIONS

- Operating Pressure:** 3000 PSI (207 Bar)
- Flow:** See PRESSURE DROP VS. FLOW graph.
- Internal Leakage:** 5 drops/min. max. at 3000 PSI (207 Bar)
- Zero leakage available:** Less than 1 drop/min. max. at 3000 PSI (207 Bar)
- Temperature:** -30°F to +250°F (-35°C to +120°C)
- Coil Rating:** Continuous from 85% to 110% of rated voltage.
- Current Draw:** 12 VDC is 1.7 amp.
- Minimum Pull-In Voltage:** 85% of rated voltage at 3000 PSI (207 Bar)
- Response Time:** 80% of final change of state with 100% voltage supplied at 100% of nominal flow rating.
- Pull-In:** 12 VDC 41 m. sec.
- Drop-Out:** 12 VDC 30 m. sec.
- Recommended Filtration:** Critical Application – ISO 16/12
Non-Critical Application – ISO 19/15
- Fluids:** Mineral-based fluids.
For other fluid compatibility, consult factory.
- Cavity:** 080-2, see page 0.20
- Cavity Tool:** See page 0.20
- Body Material:** Anodized 6061T6 aluminum alloy rated at 3000 PSI (207 Bar).

INSTALLATION DIMENSIONS



() Parentheses = Millimeters

HOW TO ORDER

