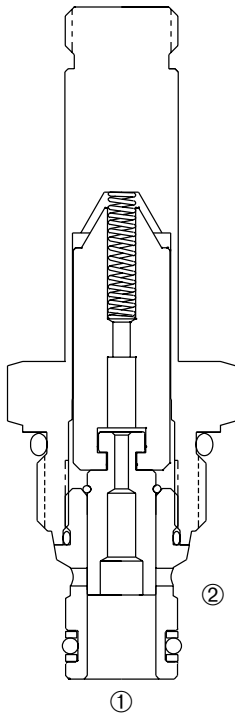


DSV2-080 (FORMERLY DSV-08)

Normally-Closed, Two-Way, Two-Position, Spool-Type Cartridge Solenoid Valve



DESCRIPTION

A cartridge valve designed to operate as a bidirectional blocking valve.

OPERATION

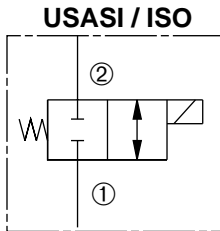
When de-energized, the DSV2-080 blocks flow in both directions.

When energized, the cartridge's spool shifts to allow flow in either direction.

Operation of Manual Override Option: To override, push button in, twist counterclockwise and release. In this position, valve will remain open in a detented condition.

To return to normal operation, push button in, twist clockwise and release. Override will be detented in this position.

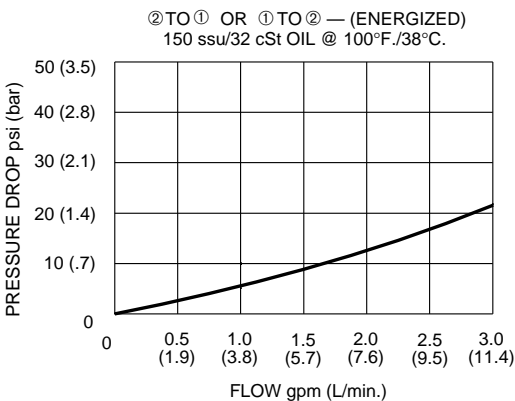
SYMBOL



FEATURES and BENEFITS

- Both ports may be fully pressurized.
- Continuous-duty solenoid.
- Hardened precision spool and sleeve for long life.
- Efficient wet-armature construction.
- Cartridges are voltage interchangeable.
- Optional coil voltages and terminations.
- Manual override option.
- Industry common cavity.
- Compact size.

PRESSURE DROP VS. FLOW



SPECIFICATIONS

Operating Pressure: 3000 PSI (207 Bar)

Flow: See PRESSURE DROP VS. FLOW graph.

Internal Leakage: 5 in.³/min. (82 cc/min.) max. at 3000 PSI (207 Bar)

Temperature: -30° F to +250° F (-35°C to +120° C)

Coil Rating: Continuous from 85% to 110% of rated voltage.

Current Draw: 12 VDC is 1.3 amps.

Minimum Pull-In Voltage: 85% of rated voltage at 3000 PSI (207 Bar)

Response Time: 80% of final change of state with 100% voltage supplied at 100% of nominal flow rating.

Pull-In: 12 VDC 85 m. sec.

Drop-Out: 12 VDC 95 m. sec.

Recommended Filtration: ISO 16/12

Fluids: Mineral-based fluids.

For other fluid compatibility consult factory.

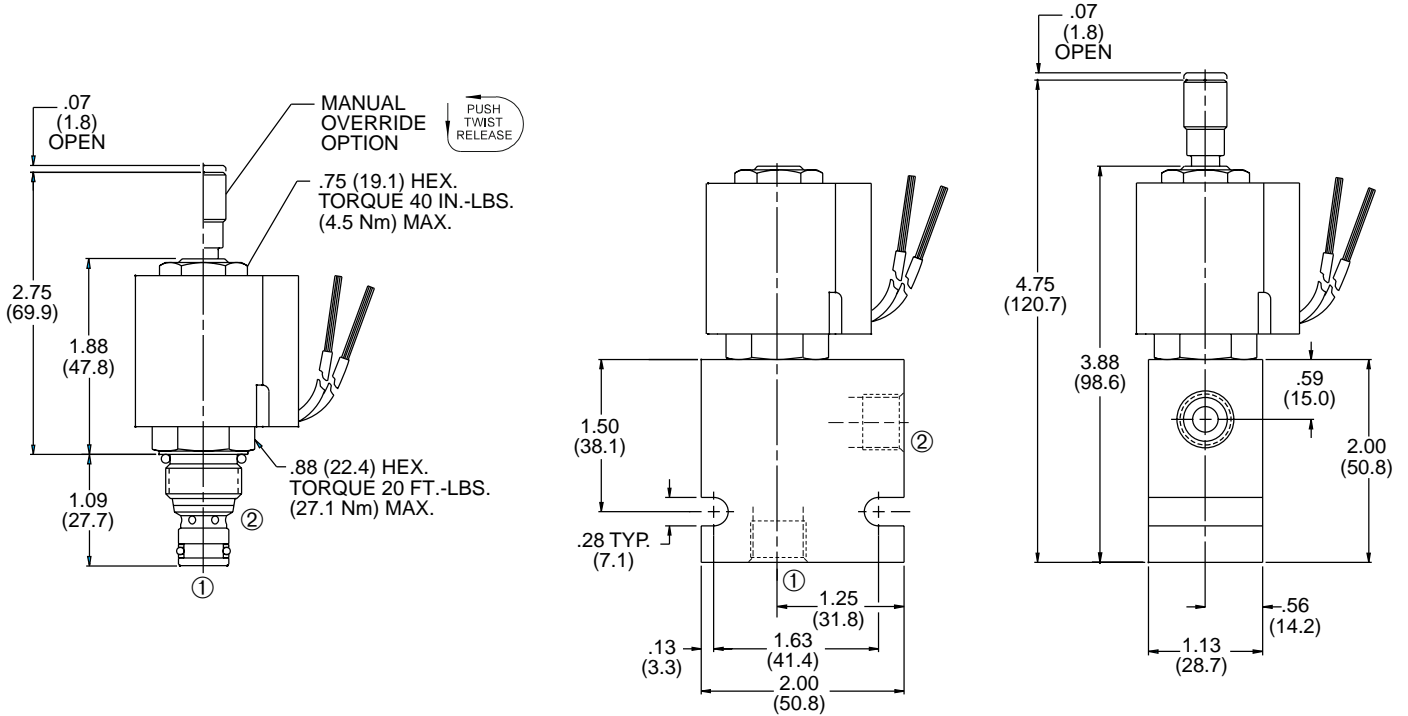
Cavity: 080-2, see page 0.20.

Cavity Tool: See page 0.20.

Body Material: Anodized 6061T6 aluminum alloy rated at 3000 PSI (207 Bar).

DELTROL

INSTALLATION DIMENSIONS



() Parentheses = Millimeters

HOW TO ORDER

