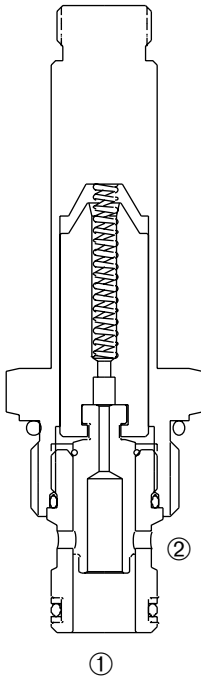


DSV2-100

Normally-Closed, Two-Way, Two-Position, Spool-Type Cartridge Solenoid Valve



DESCRIPTION

A cartridge valve designed to operate as a bidirectional blocking valve.

OPERATION

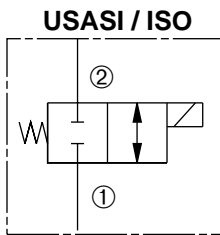
When de-energized, the DSV2-100 blocks flow in both directions.

When energized, the cartridge's spool shifts to allow flow in either direction.

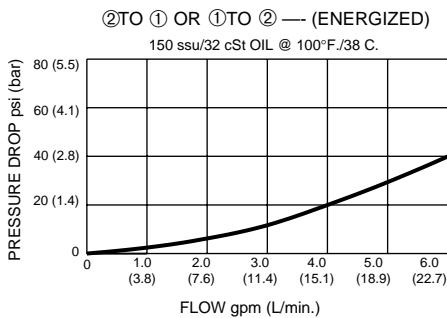
Operation of Manual Override Option: To override, push button in, twist counterclockwise and release. In this position, valve will remain open in a detented condition.

To return to normal operation, push button in, twist clockwise and release. Override will be detented in this position.

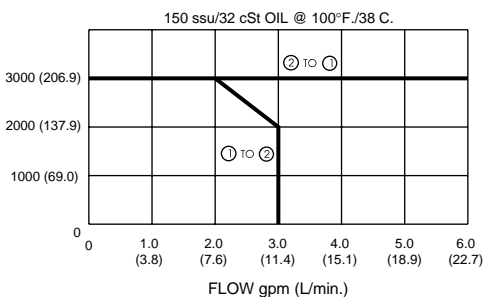
SYMBOL



PRESSURE DROP VS. FLOW



PERFORMANCE CHARACTERISTIC



FEATURES and BENEFITS

- Both ports may be fully pressurized.
- Continuous-duty solenoid.
- Hardened precision spool and sleeve for long life.
- Efficient wet-armature construction.
- Cartridges are voltage interchangeable.
- Optional coil voltages and terminations.
- Manual override option.
- Industry common cavity.
- Compact size.

SPECIFICATIONS

Operating Pressure: 3000 PSI (207 Bar)

Flow: See PERFORMANCE CHARACTERISTIC graph.

Internal Leakage: 5 in.³/min. (82 cc/min.) max. at 3000 PSI (207 Bar)

Temperature: -30° F to +250° F (-35°C to +120° C)

Coil Rating: Continuous from 85% to 110% of rated voltage.

Current Draw: 12 VDC is 1.7 amps.

Minimum Pull-In Voltage: 85% of rated voltage at 3000 PSI (207 Bar)

Response Time: 80% of final change of state with 100% voltage supplied at 100% of nominal flow rating.

Pull-In: 12 VDC

Drop-Out: 12 VDC

Recommended Filtration: ISO 16/12

Fluids: Mineral-based fluids.

For other fluid compatibility consult factory.

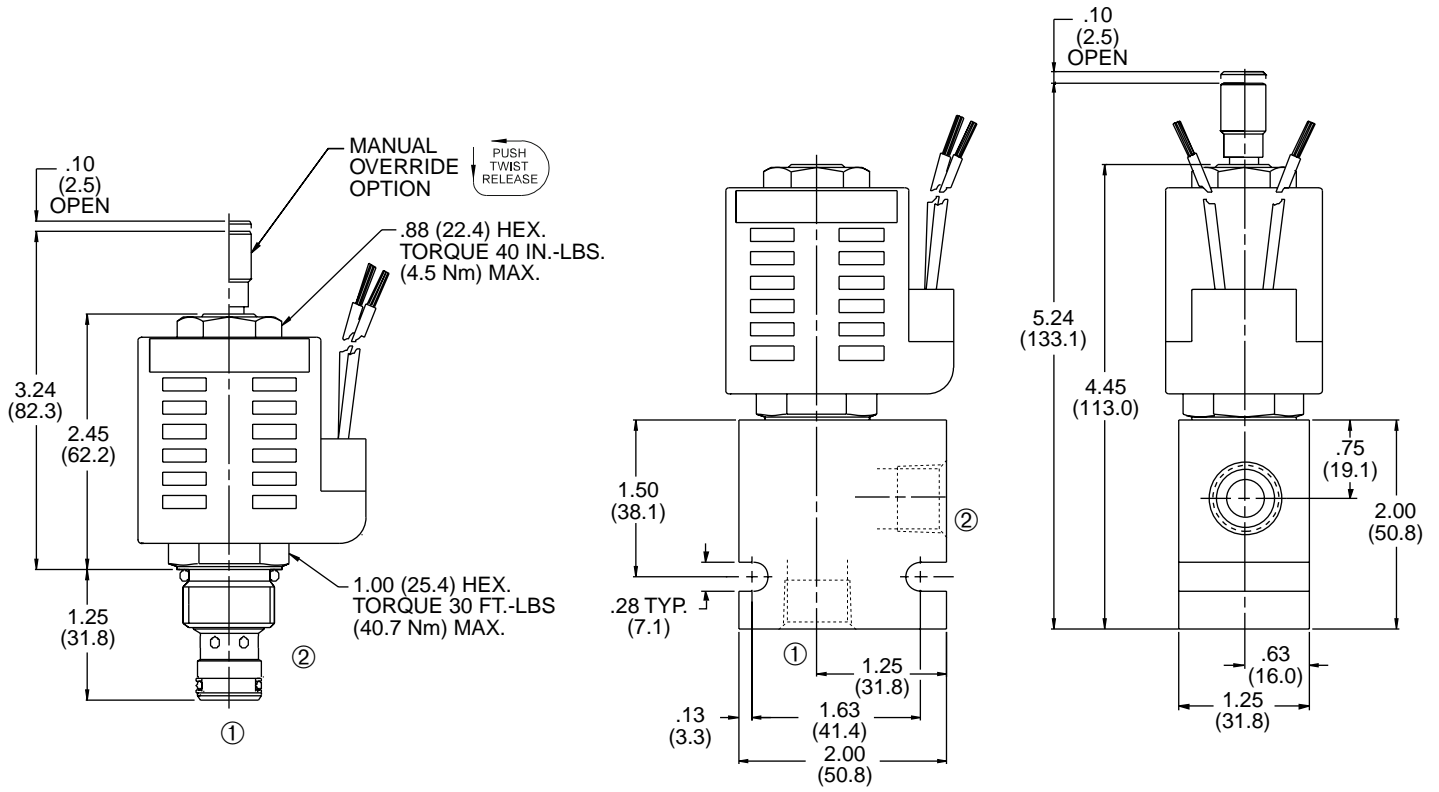
Cavity: 100-2, see page 0.21.

Cavity Tool: See page 0.21.

Body Material: Anodized 6061T6 aluminum alloy rated at 3000 PSI (207 Bar).

DELTROL

INSTALLATION DIMENSIONS



() Parentheses = Millimeters

HOW TO ORDER

