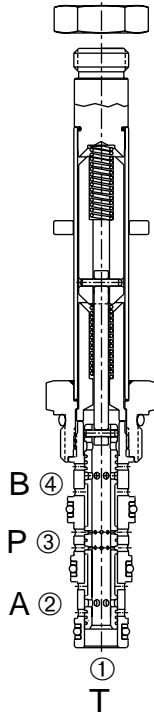


DSV-080-34-T-*-*-*-**

Four-Way, 3 Position, Tandem Center, Spool-Type Cartridge Solenoid Valve



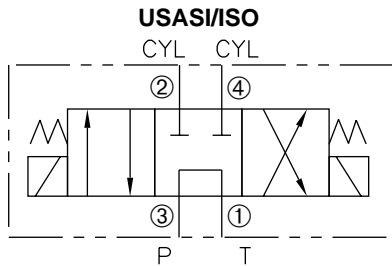
DESCRIPTION

A cartridge valve designed as a three position, 4-way solenoid valve.

OPERATION

When de-energized, the valve allows flow between the ① and ③ ports with ports ② and ④ blocked. When the lower solenoid is energized, the valve allows flow between the ① and ② ports and the ③ and ④ ports. When the upper solenoid is energized, the valve allows flow between the ① and ④ ports and the ② and ③ ports.

SYMBOL



FEATURES and BENEFITS

- Continuous-duty solenoid.
- Hardened precision spool and sleeve for long life.
- Efficient wet-armature construction.
- Cartridges are voltage interchangeable.
- Optional coil voltages and terminations.
- Industry common cavity.
- Compact size.

SPECIFICATIONS

Operating Pressure: 3000 PSI

Flow: See PRESSURE DROP VS. FLOW CURVE.

Internal Leakage: (Per land) 10 cu in./min. max. (164 cc/min.)

Temperature: -30°F to +250°F (-35°C to +120°C)

Coil Rating: Continuous from 85% of rated voltage to 110% of rated voltage.

Current Draw: 12 VDC is 1.3 amp.

Recommended Filtration: ISO 16/12

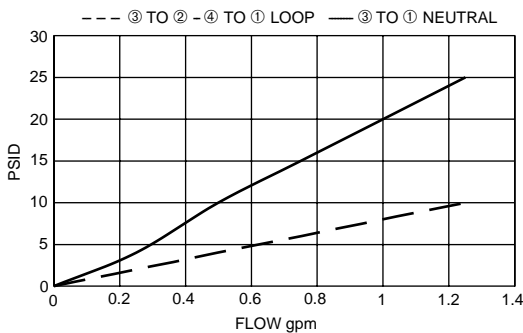
Fluids: Mineral-based fluids.

For other fluid compatibility, consult factory.

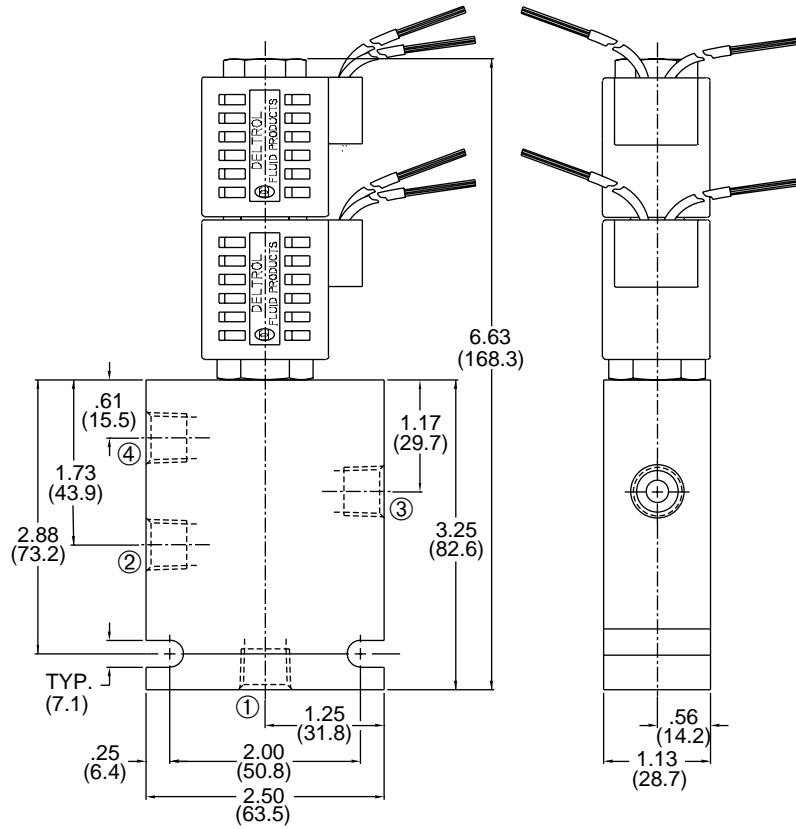
Cavity: 080-4, see page 0.20

Body Material: Anodized 6061T6 aluminum alloy rated at 3000 PSI (207 Bar)

PRESSURE DROP VS. FLOW



INSTALLATION DIMENSIONS



() Parentheses = Millimeters

HOW TO ORDER

