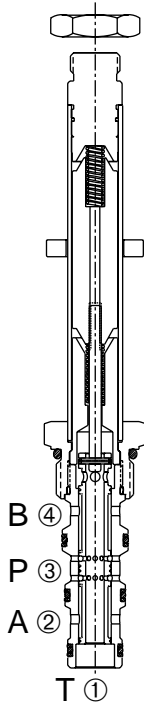


## DSV-100-34-T-\*-\*\*\*-\*\*

Four-Way, 3 Position, Tandem Center, Spool-Type Cartridge Solenoid Valve



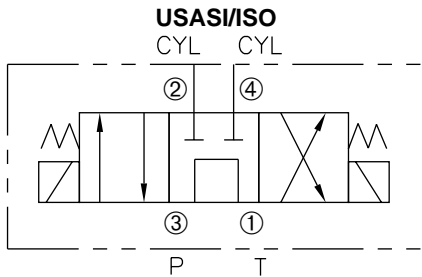
### DESCRIPTION

A cartridge valve designed as a three position, 4-way solenoid valve.

### OPERATION

When de-energized, the valve allows flow between the ① and ③ ports and with the ② and ④ ports blocked. When the lower solenoid is energized, the valve allows flow between ① and ② ports and the ③ and ④ ports. When the upper solenoid is energized, the valve allows flow between the ① and ④ ports and the ② and ③ ports.

### SYMBOL



### FEATURES and BENEFITS

- Continuous-duty solenoid.
- Hardened precision spool and sleeve for long life.
- Efficient wet-armature construction.
- Cartridges are voltage interchangeable.
- Optional coil voltages and terminations.
- Industry common cavity.
- Compact size.

### SPECIFICATIONS

**Operating Pressure:** 3000 PSI

**Flow:** See PRESSURE DROP VS. FLOW CURVE.

**Internal Leakage:** (Per land) 10 cu in./min. max. (164 cc/min.)

**Temperature:** -30°F to +250°F (-35°C to +120°C)

**Coil Rating:** Continuous from 85% of rated voltage to 110% of rated voltage.

**Current Draw:** 12 VDC is 1.83 amp.

**Recommended Filtration:** ISO 16/12

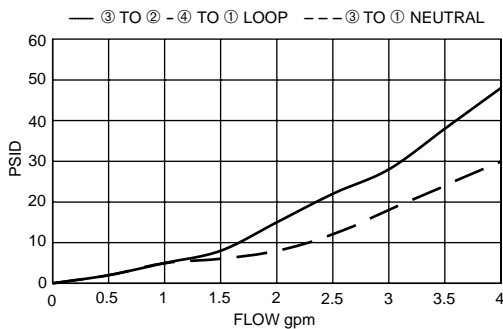
**Fluids:** Mineral-based fluids.

For other fluid compatibility, consult factory.

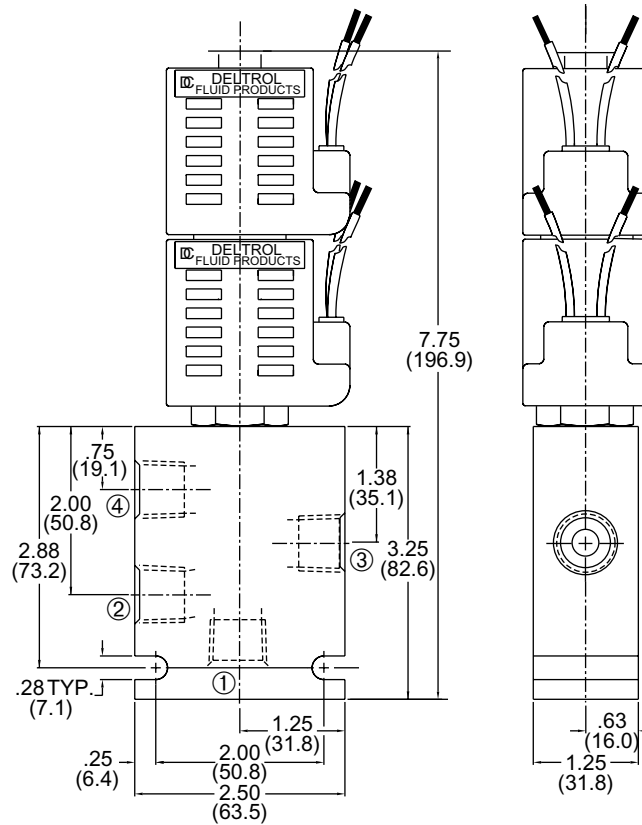
**Cavity:** 100-4, see page 0.21

**Body Material:** Anodized 6061T6 aluminum alloy rated at 3000 PSI (207 Bar)

### PRESSURE DROP VS. FLOW



## INSTALLATION DIMENSIONS



( ) Parentheses = Millimeters

## HOW TO ORDER

