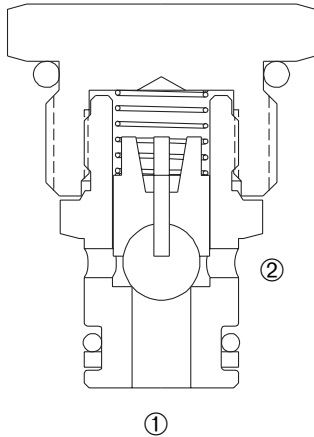


## DCV-080

### Direct-Acting, Ball-Type Cartridge Check Valve



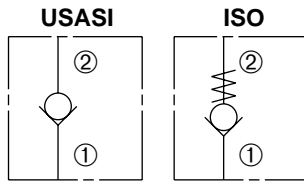
#### DESCRIPTION

A cartridge valve designed to allow free flow in one direction, while preventing flow in the opposite direction. This valve is commonly used as a load-holding or blocking valve.

#### OPERATION

Pressure at ① overcomes the spring-bias ball and allows free flow to ②. Flow in the opposite direction, from ② to ①, is blocked by the ball.

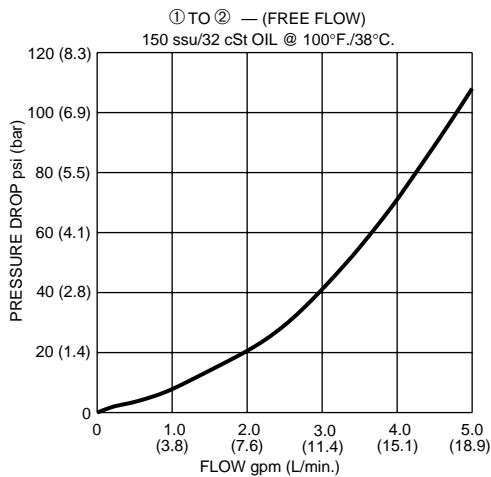
#### SYMBOLS



#### FEATURES and BENEFITS

- Guide ball assembly.
- Chrome alloy ball for long life.
- Low leakage.
- Industry common cavity.
- Compact size.

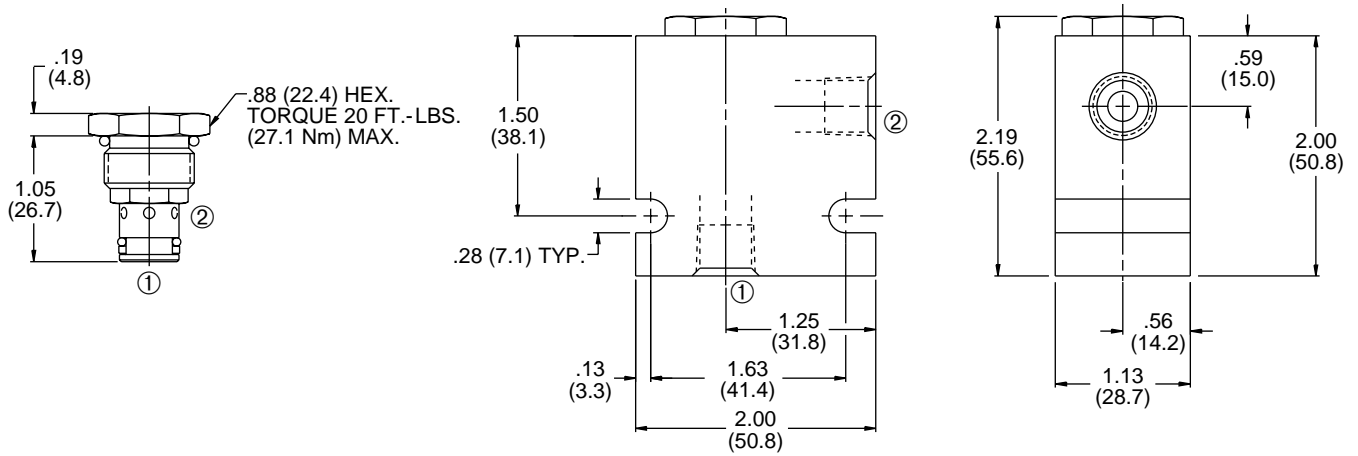
#### PRESSURE DROP VS. FLOW



#### SPECIFICATIONS

- Operating Pressure:** 3000 PSI (207 Bar)
- Flow:** See PRESSURE DROP VS. FLOW graph.
- Internal Leakage:** 5 drops/min. max. at 3000 PSI (207 Bar)
- Crack Pressure:** 2 PSI (0.1 Bar)
- Temperature:** -30°F to +220°F (-35°C to +104°C)
- Recommended Filtration:** Critical Application – ISO 16/12  
Non-Critical Application – ISO 19/15
- Fluids:** Mineral-based fluids.  
For other fluid compatibility, consult factory.
- Cavity:** 080-2, see page 0.20
- Cavity Tool:** See page 0.20
- Body Material:** Anodized 6061T6 aluminum alloy rated at 3000 PSI (207 Bar).

## INSTALLATION DIMENSIONS



( ) Parentheses = Millimeters

## HOW TO ORDER

