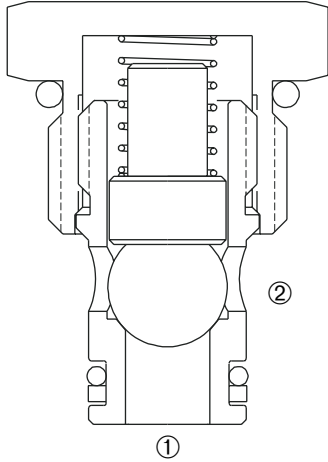


DCV-080

Direct-Acting, Ball-Type Cartridge Check Valve



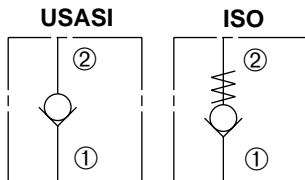
DESCRIPTION

A cartridge valve designed to allow free flow in one direction, while preventing flow in the opposite direction. This valve is commonly used as a load-holding or blocking valve.

OPERATION

Pressure at ① overcomes the spring-bias ball and allows free flow to ②. Flow in the opposite direction, from ② to ①, is blocked by the ball.

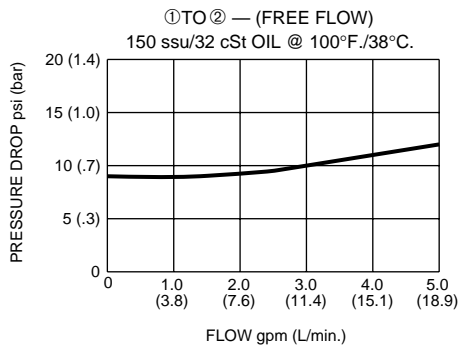
SYMBOLS



FEATURES and BENEFITS

- Guide ball assembly
- Torlon® ball for positive shut-off.
- Zero leakage.
- Industry common cavity.
- Compact size.

PRESSURE DROP VS. FLOW



SPECIFICATIONS

Operating Pressure: 3000 PSI (207 Bar)

Flow: See PRESSURE DROP VS. FLOW graph.

Internal Leakage: 2 drops/min. max. at 3000 PSI (207 Bar)

Crack Pressures: 5 PSI (0.3 Bar)

10 PSI (0.7 Bar)

30 PSI (2.1 Bar)

60 PSI (4.1 Bar)

100 PSI (6.9 Bar)

Temperature: -30°F to +220°F (-35°C to +104°C)

Recommended Filtration: Critical Application – ISO 16/12

Non-Critical Application – ISO 19/15

Fluids: Mineral-based fluids.

For other fluid compatibility, consult factory.

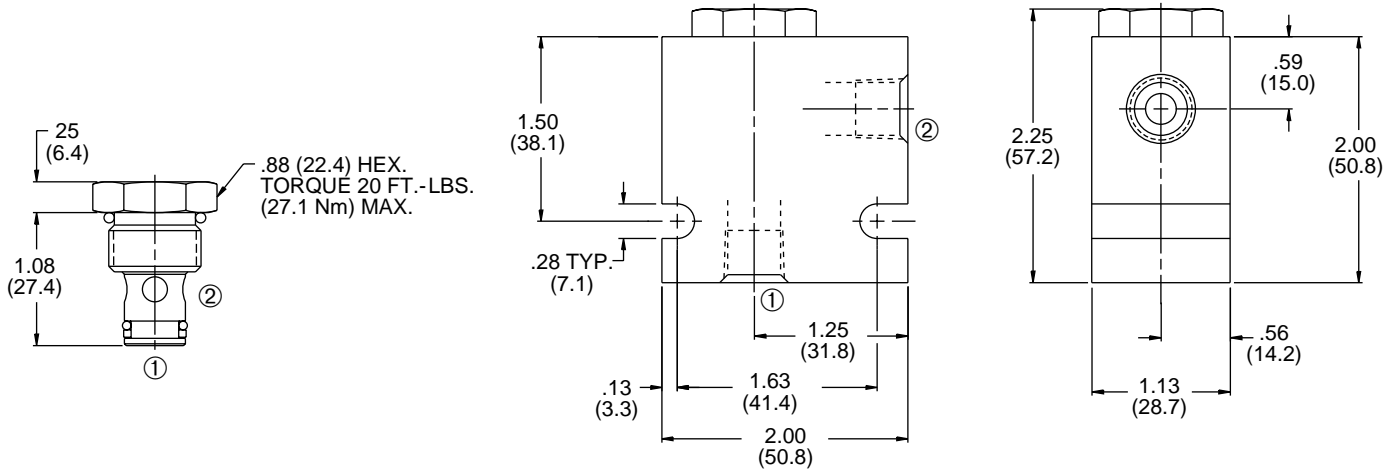
Cavity: 080-2, see page 0.20

Cavity Tool: See page 0.20

Body Material: Anodized 6061T6 aluminum

alloy rated at 3000 PSI (207 Bar).

INSTALLATION DIMENSIONS



() Parentheses = Millimeters

HOW TO ORDER

