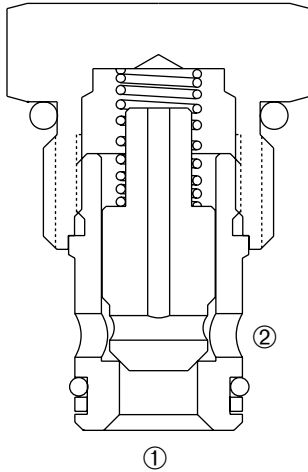


## DCV-100

### Direct-Acting, Poppet-Type Cartridge Check Valve



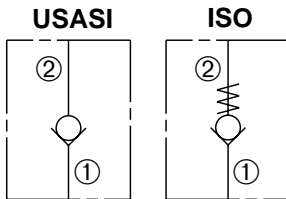
#### DESCRIPTION

A cartridge valve designed to allow free flow in one direction, while preventing flow in the opposite direction. This valve is commonly used as a load-holding or blocking valve.

#### OPERATION

Pressure at ① overcomes the spring-bias poppet and allows free flow to ②. Flow in the opposite direction, from ② to ①, is blocked by the poppet.

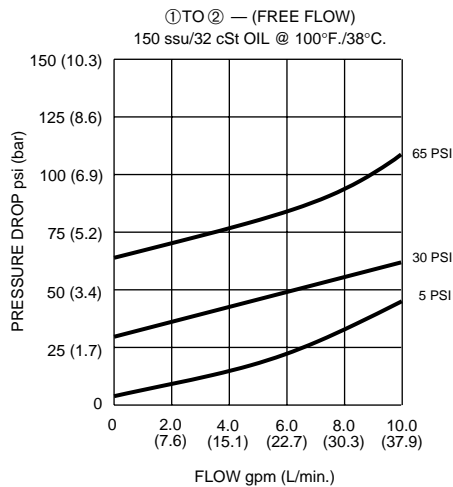
#### SYMBOLS



#### FEATURES and BENEFITS

- Hardened poppet and seat for long life.
- Low leakage.
- Industry common cavity.
- Compact size.

#### PRESSURE DROP VS. FLOW



#### SPECIFICATIONS

**Operating Pressure:** 3000 PSI (207 Bar)

**Flow:** See PRESSURE DROP VS. FLOW graph.

**Internal Leakage:** 5 drops/min. max. at 3000 PSI (207 Bar)

**Crack Pressures:** 5 PSI ( 0.3 Bar)

15 PSI ( 1.0 Bar)

30 PSI ( 2.1 Bar)

65 PSI ( 4.5 Bar)

100 PSI ( 6.9 Bar)

300 PSI (20.7 Bar)

**Temperature:** -30°F to +250°F (-35°C to +120°C)

**Recommended Filtration:** Critical Application – ISO 16/12

Non-Critical Application – ISO 19/15

**Fluids:** Mineral-based fluids.

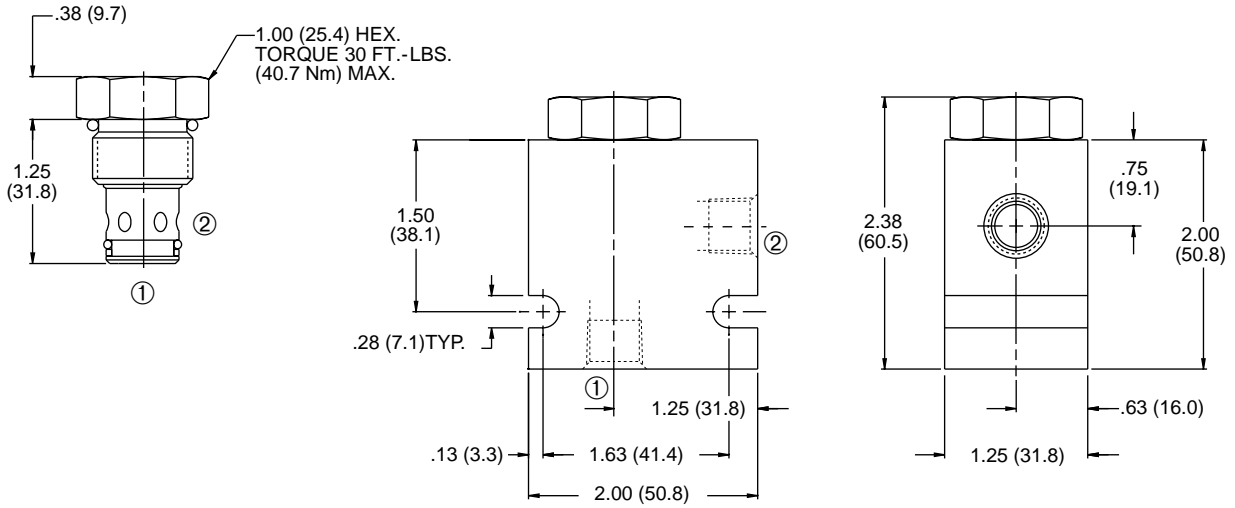
For other fluid compatibility, consult factory.

**Cavity:** 100-2, see page 0.21

**Cavity Tool:** See page 0.21

**Body Material:** Anodized 6061T6 aluminum alloy rated at 3000 PSI (207 Bar).

## INSTALLATION DIMENSIONS



( ) Parentheses = Millimeters

## HOW TO ORDER

