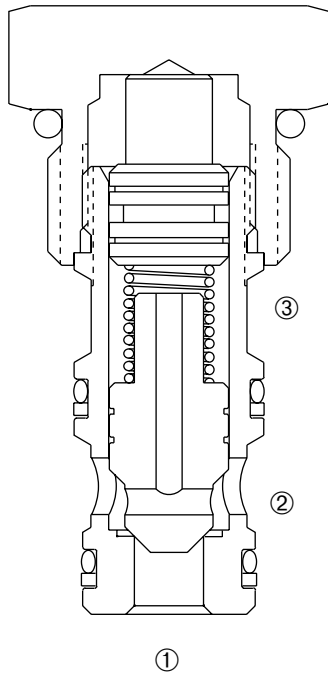


DPC2-100

Pilot To Close, Poppet-Type Cartridge Check Valve



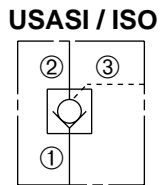
DESCRIPTION

A cartridge valve designed to allow free flow in one direction while preventing flow in the opposite direction. The valve can be piloted to block flow in both directions. This valve can be used as a load-holding or blocking valve.

OPERATION

Pressure at ① overcomes the spring-bias poppet and allows free flow to ②. Flow in opposite direction, from ② to ①, is blocked by the poppet. When the required pilot pressure is achieved at ③, the poppet is held closed to block flow between ② and ①. The pilot piston area to poppet seat area ratio is 3 to 1.

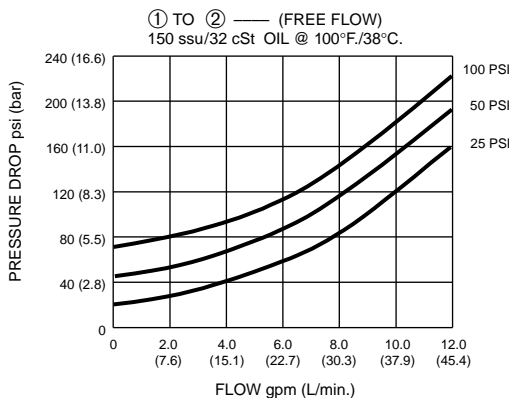
SYMBOL



FEATURES and BENEFITS

- Hardened poppet and sleeve for long life.
- Low leakage.
- Industry common cavity.
- Compact size.

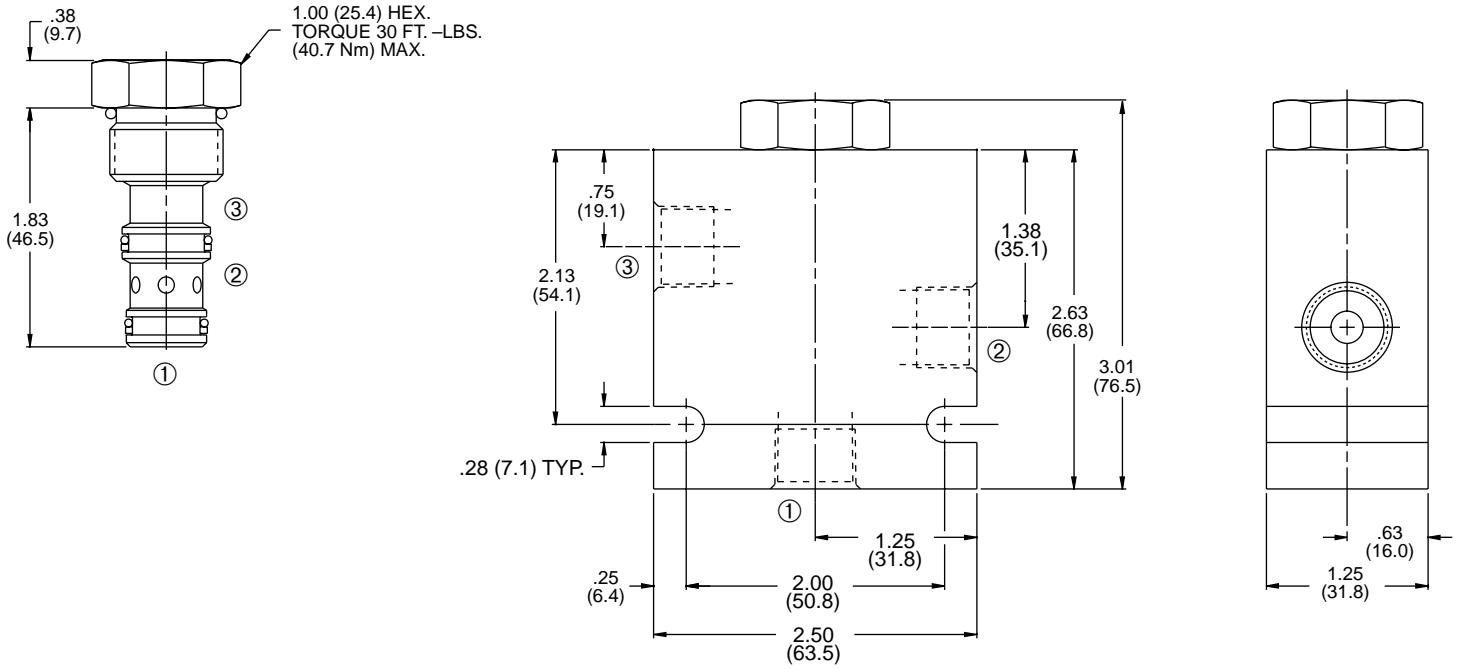
PRESSURE DROP VS. FLOW



SPECIFICATIONS

- Operating Pressure:** 3000 PSI (207 Bar)
- Flow:** See PRESSURE DROP VS. FLOW graph.
- Internal Leakage:** 5 drops/min. max. at 3000 PSI (207 Bar)
- Crack Pressures:** 25 PSI (1.7 Bar)
50 PSI (3.4 Bar)
100 PSI (6.9 Bar)
- Pilot Ratio:** 3 to 1
- Temperature:** -30°F to +250°F (-35°C to +120°C).
- Recommended Filtration:** Critical Application-ISO 16/12
Non-Critical Application-ISO 19/15
- Fluids:** Mineral-based fluids.
For other fluid compatibility consult factory.
- Cavity:** 100-3, see page 0.21.
- Cavity Tool:** See page 0.21.
- Body Material:** Anodized 6061T6 aluminum alloy rated at 3000 PSI (207 Bar).

INSTALLATION DIMENSIONS



() Parentheses = Millimeters

HOW TO ORDER

