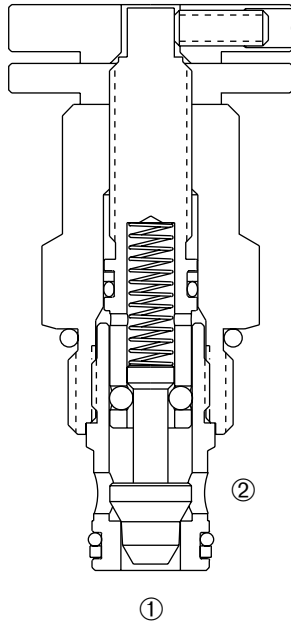


DFC-100

Adjustable, Cartridge Flow Control Valve



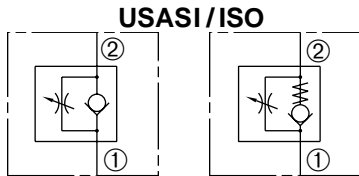
DESCRIPTION

A cartridge valve designed to provide variable flow restriction in one direction with free flow in the opposite direction.

OPERATION

The DFC-100 varies flow restriction by adjusting needle in or out. Flow is metered from ② to ①. Free reverse flow is from ① to ②.

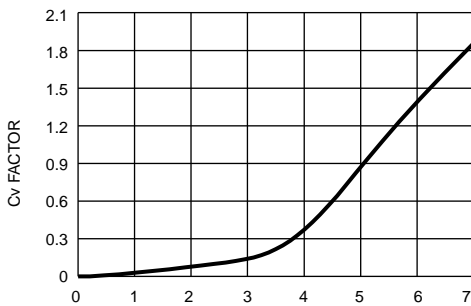
SYMBOLS



FEATURES and BENEFITS

- Hardened poppet and seat for long life.
- Aluminum knob and disc nut.
- Full range of adjustments.
- Adjustment may be locked in place.
- Industry common cavity.
- Compact size.

CV FACTOR VS. TURNS OPEN



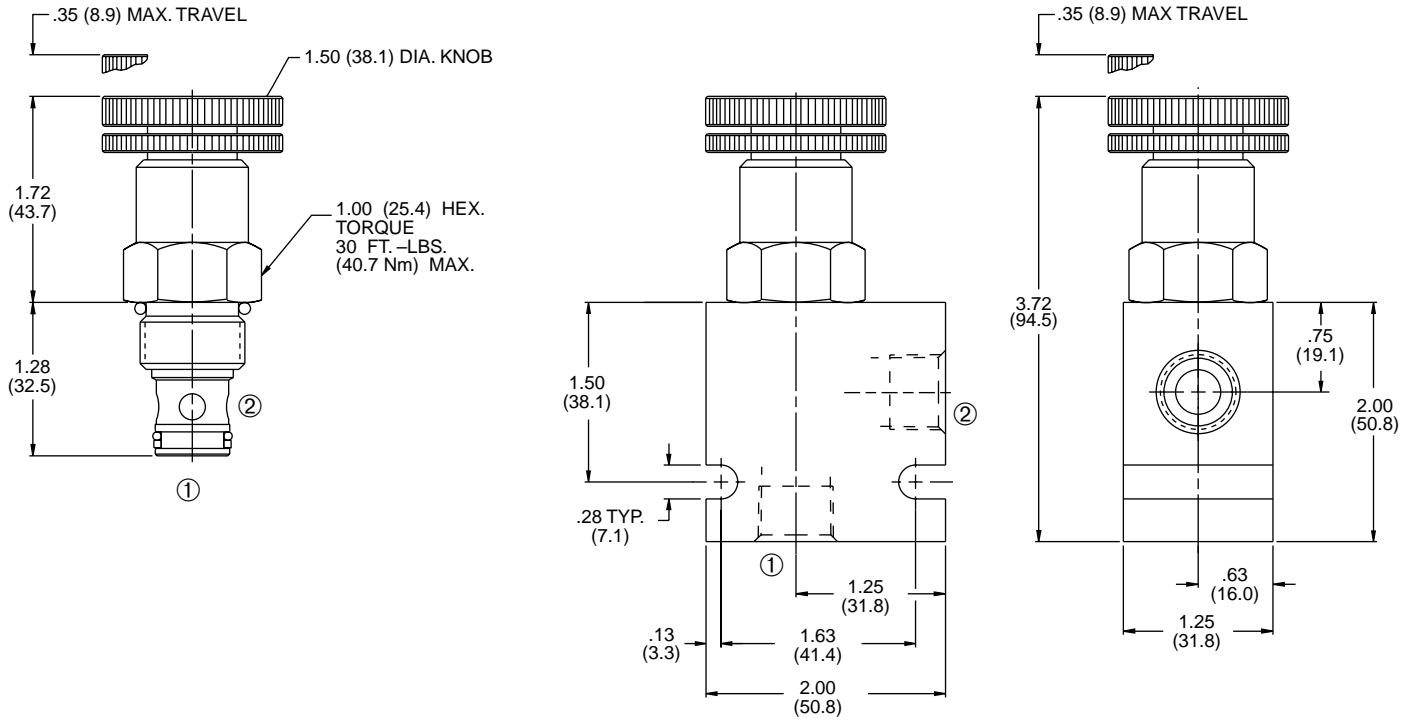
$$\text{FLOW IN GPM} = \frac{C_v \sqrt{P_1 - P_2}}{\sqrt{G_f}}$$

C_v = Flow Coefficient
 P_1 = Inlet Pressure (psi)
 P_2 = Outlet Pressure (psi)
 G_f = specific gravity of medium at operating temperature in °F.

SPECIFICATIONS

Operating Pressure: 3000 PSI (207 Bar)
Flow: 20 GPM (75.7 L/min.) Max. recommended input.
Temperature: -30° F to +250° F (-35°C to +120° C)
Recommended Filtration: ISO 19/15
Fluids: Mineral-based fluids.
 For other fluid compatibility consult factory.
Cavity: 100-2, see page 0.21.
Cavity Tool: See page 0.21.
Body Material: Anodized 6061T6 aluminum alloy rated at 3000 PSI (207 Bar).

INSTALLATION DIMENSIONS



() Parentheses = Millimeters

HOW TO ORDER

