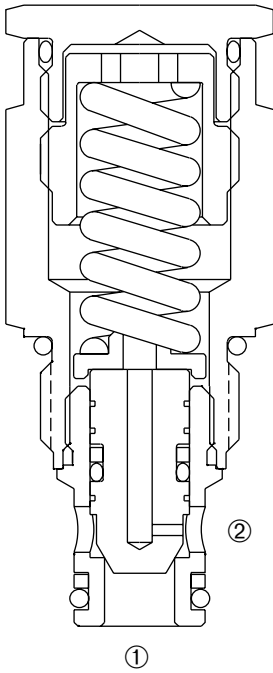


DRV-080

Tamper-Resistant, Direct-Acting Cartridge Relief Valve



DESCRIPTION

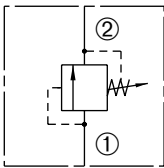
An adjustable, direct acting poppet cartridge valve designed to limit pressure in hydraulic circuits.

OPERATION

The DRV-080 prevents flow from ① to ② until the set crack pressure at ① is achieved. The poppet then unseats allowing flow from ① to ② protecting the circuit from over pressurization.

SYMBOL

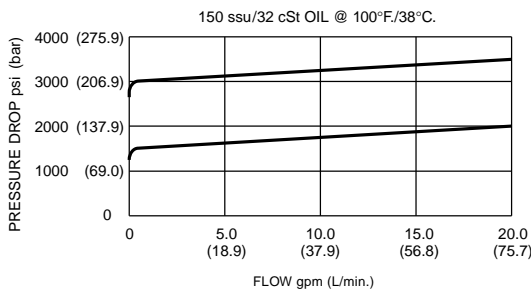
USASI / ISO



FEATURES and BENEFITS

- Quiet operation.
- Rapid response to pressure surges.
- Hardened poppet and seat for long life.
- Hidden adjustment (tamper resistant).
- Industry common cavity.
- Compact size.

PRESSURE DROP VS. FLOW



SPECIFICATIONS

Operating Pressure: 3000 PSI (207 Bar)

Flow: See PRESSURE DROP VS. FLOW graph.

Internal Leakage: 20 drops/min. max. at reseal.

Crack Pressure Defined: Determined at .25 GPM (0.9 L/min.)

Reseat Pressure: Nominal 80% of crack pressure.

Spring Range: 50 to 3000 PSI (3.4 to 207 Bar)

Preset: 1500 PSI (103 Bar)

Temperature: -30° F to +250° F (-35°C to +120° C)

Recommended Filtration: ISO 19/15

Fluids: Mineral-based fluids.

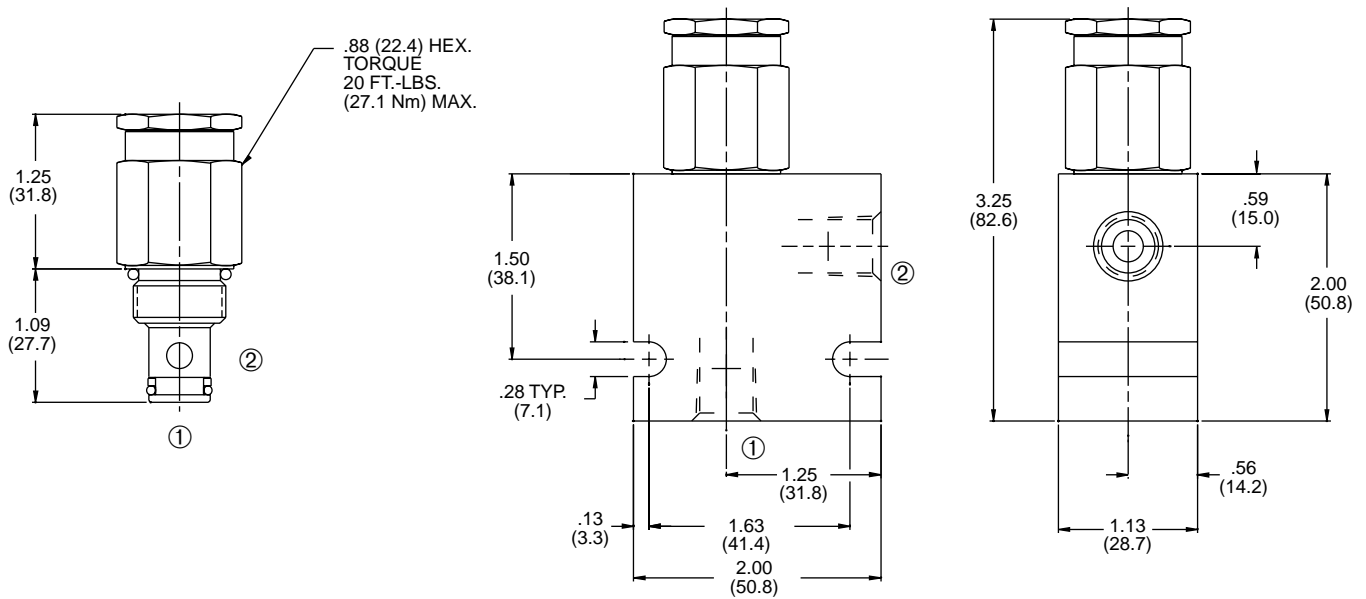
For other fluid compatibility consult factory.

Cavity: 080-2, see page 0.20.

Cavity Tool: See page 0.20.

Body Material: Anodized 6061T6 aluminum alloy rated at 3000 PSI (207 Bar).

INSTALLATION DIMENSIONS



() Parentheses = Millimeters

HOW TO ORDER

