

## DDRV-080

### Tamper-Resistant, Direct-Acting Differential Area Cartridge Relief Valve

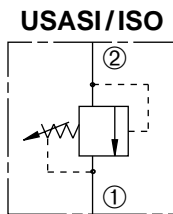
#### DESCRIPTION

An adjustable, direct acting poppet cartridge valve designed to limit pressure in hydraulic circuits.

#### OPERATION

The DDRV-080 prevents flow from ② to ① until the set crack pressure at ② is achieved. The poppet then unseats allowing flow from ② to ① protecting the circuit from over pressurization.

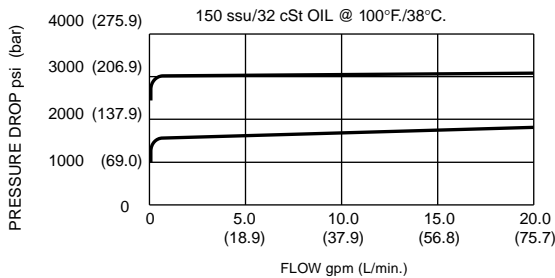
#### SYMBOL



#### FEATURES and BENEFITS

- Quiet operation.
- Rapid response to pressure surges.
- Low pressure rise.
- Hardened poppet and seat for long life.
- Hidden adjustment (tamper resistant).
- Industry common cavity.
- Compact size.

#### PRESSURE DROP VS. FLOW



#### SPECIFICATIONS

**Operating Pressure:** 3000 PSI (207 Bar)

**Flow:** See PRESSURE DROP VS. FLOW graph.

**Internal Leakage:** 10 drops/min. max. at reseal.

**Crack Pressure Defined:** Determined at .25 GPM (0.9 L/min.)

**Reseat Pressure:** Nominal 80% of crack pressure.

**Spring Range:** 50 to 3000 PSI (3.4 to 207 Bar)

Preset: 1500 PSI (103 Bar)

**Temperature:** -30° F to +250° F (-35°C to +120° C)

**Recommended Filtration:** ISO 19/15

**Fluids:** Mineral-based fluids.

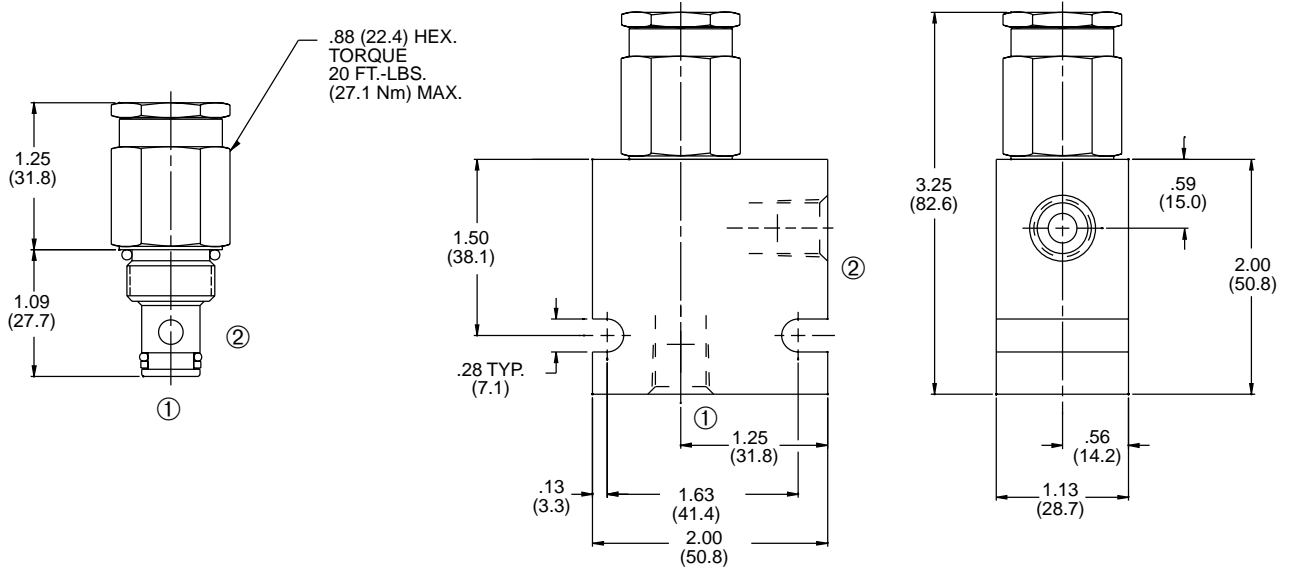
For other fluid compatibility consult factory.

**Cavity:** 080-2, see page 0.20.

**Cavity Tool:** See page 0.20.

**Body Material:** Anodized 6061T6 aluminum alloy rated at 3000 PSI (207 Bar).

## INSTALLATION DIMENSIONS



( ) Parentheses = Millimeters

## HOW TO ORDER

