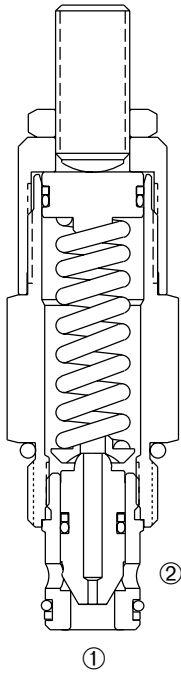


DDRV-100

Adjustable, Direct-Acting, Differential Area Cartridge Relief Valve



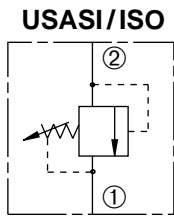
DESCRIPTION

An adjustable, direct acting poppet cartridge valve designed to limit pressure in hydraulic circuits.

OPERATION

The DDRV-100 prevents flow from ② to ① until the set crack pressure at ② is achieved. The poppet then unseats allowing flow from ② to ① protecting the circuit from over pressurization.

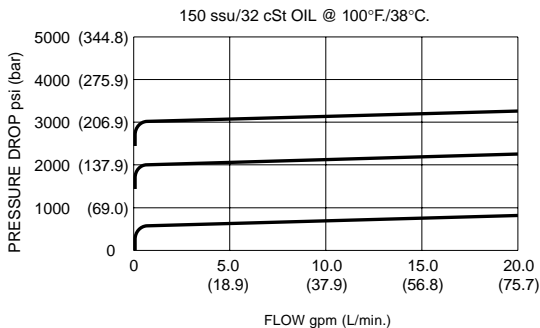
SYMBOL



FEATURES and BENEFITS

- Rapid response to pressure surges.
- Low pressure rise.
- Hardened poppet and seat for long life.
- Hidden adjustment (tamper resistant).
- Aluminum knob and disc nut option.
- Adjustment may be locked in place.
- Industry common cavity.
- Compact size.

PRESSURE DROP VS. FLOW



SPECIFICATIONS

- Operating Pressure:** 3600 PSI (248 Bar)
- Flow:** See PRESSURE DROP VS. FLOW graph.
- Internal Leakage:** 20 drops/min. max. at reseal.
- Crack Pressure Defined:** Determined at .25 GPM (0.9 L/min.)
- Reseat Pressure:** Nominal 80% of crack pressure.
- Spring Ranges:**
 - 100 to 600 PSI (7 to 41 Bar)
 - Preset: 300 PSI (21 Bar)
 - 250 to 2000 PSI (17 to 138 Bar)
 - Preset: 1000 PSI (69 Bar)
 - 600 to 3600 PSI (41 to 248 Bar)
 - Preset: 2000 PSI (138 Bar)

Temperature: -30° F to +250° F (-35°C to +120° C)

Recommended Filtration: ISO 19/15

Fluids: Mineral-based fluids.

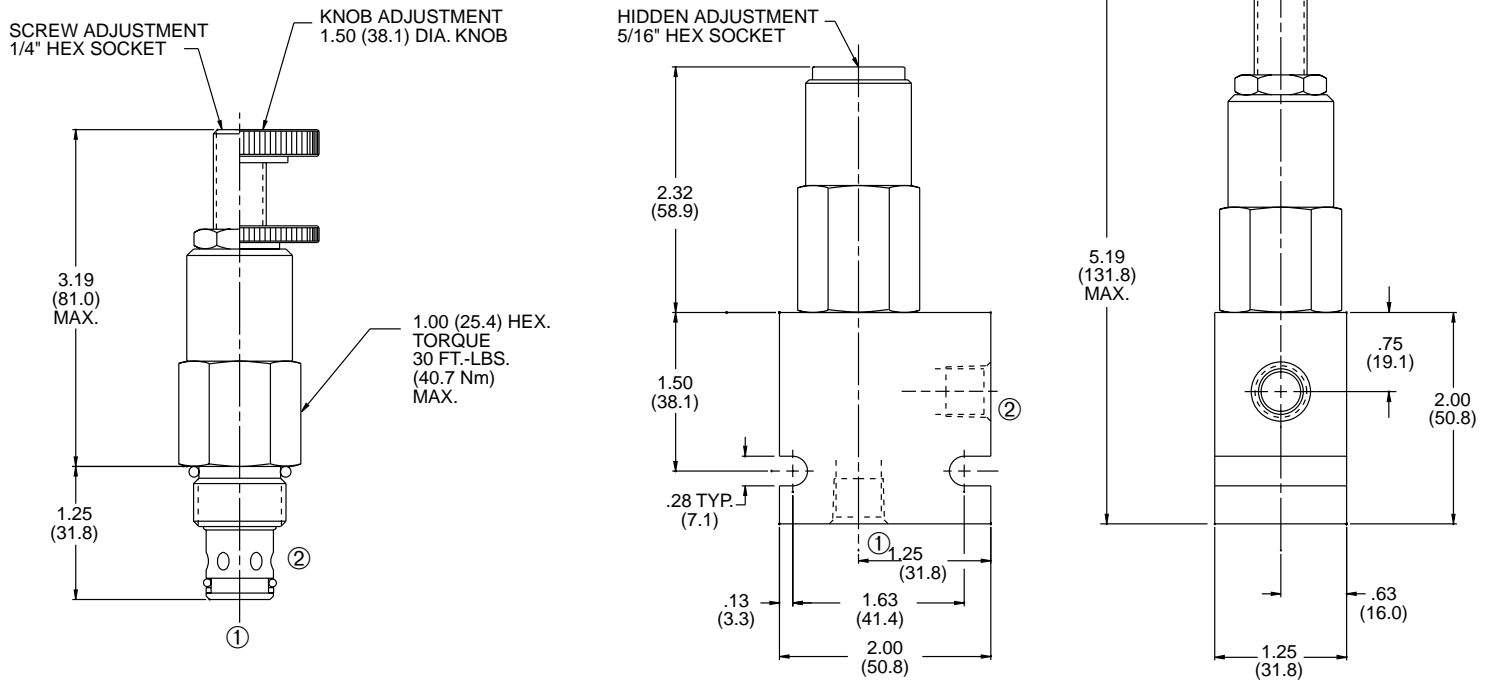
For other fluid compatibility consult factory.

Cavity: 100-2, see page 0.21.

Cavity Tool: See page 0.21.

Body Material: Anodized 6061T6 aluminum alloy rated at 3000 PSI (207 Bar).

INSTALLATION DIMENSIONS



() Parentheses = Millimeters

HOW TO ORDER

