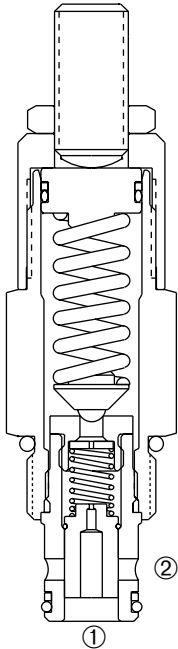


DPOR-100

Adjustable, Pilot-Operated Cartridge Relief Valve



DESCRIPTION

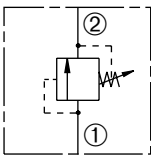
An adjustable, pilot-operated spool type cartridge valve designed to limit pressure in hydraulic circuits.

OPERATION

The DPOR-100 prevents flow from ① to ② until pressure at ① exceeds the set crack pressure and opens the pilot section. The pilot flow creates a pressure differential across the spool which causes the valve to open allowing flow from ① or ② protecting the circuit from over pressurization.

SYMBOL

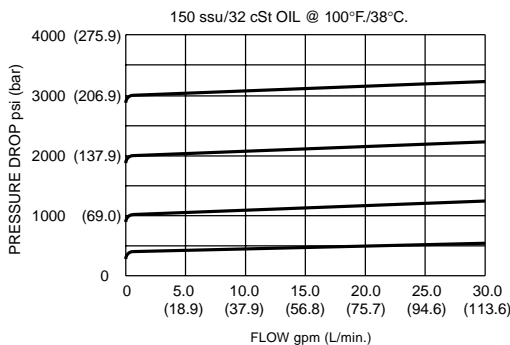
USASI/ISO



FEATURES and BENEFITS

- Rapid response to pressure surges.
- Low pressure rise.
- Accurate pilot-operated design.
- Hardened parts for long life.
- Hidden adjustment (tamper resistant) option.
- Aluminum knob and disc nut option.
- Adjustment may be locked in place.
- Industry common cavity.
- Compact size.

PRESSURE DROP VS. FLOW



SPECIFICATIONS

Operating Pressure: 3000 PSI (207 Bar)

Flow: See PRESSURE DROP VS. FLOW graph.

Internal Leakage: 5 in.³/min. (82cc/min.) max. at reseal.

Crack Pressure Defined: Determined at .25 GPM (0.9 L/min.)

Reseat Pressure: Nominal 80% of crack pressure.

Spring Ranges: 100 to 400 PSI (7 to 28 Bar)

Preset: 300 PSI (21 Bar)

300 to 2000 PSI (21 to 138 Bar)

Preset: 1000 PSI (69 Bar)

400 to 3000 PSI (28 to 207 Bar)

Preset: 2000 PSI (138 Bar)

600 to 4000 PSI (41 to 276 Bar)

Preset: 3000 PSI (207 Bar)

Temperature: -30° F to +250° F (-35°C to +120° C)

Recommended Filtration: ISO 19/15

Fluids: Mineral-based fluids.

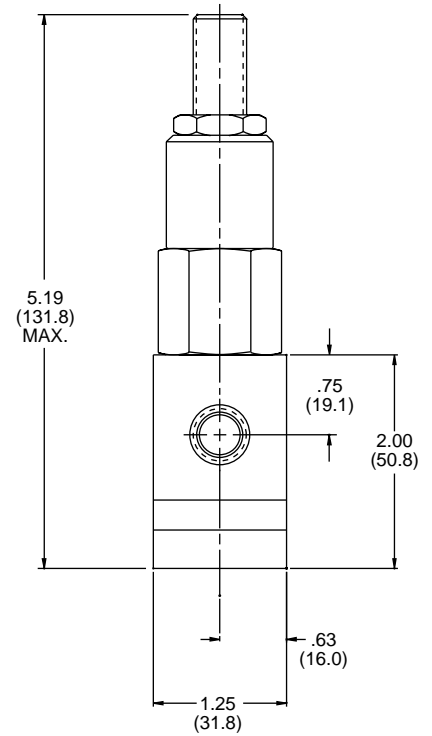
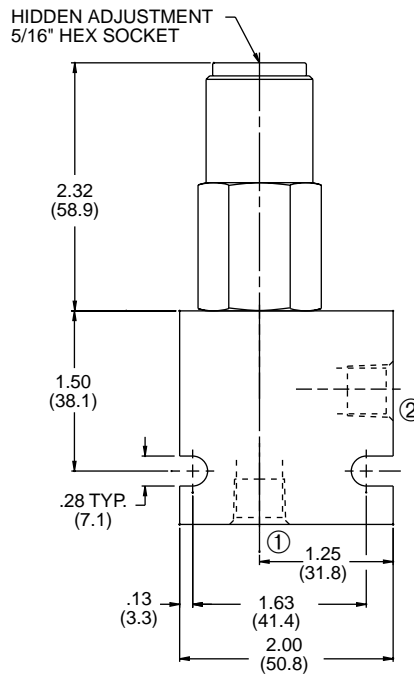
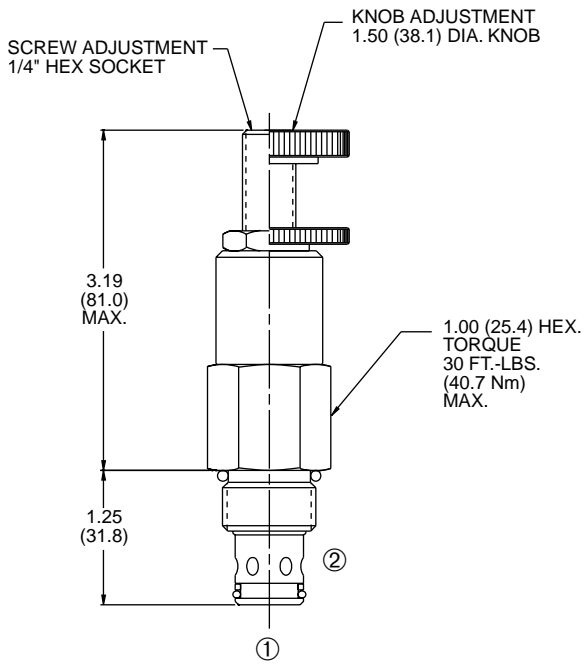
For other fluid compatibility consult factory.

Cavity: 100-2, see page 0.21.

Cavity Tool: See page 0.21.

Body Material: Anodized 6061T6 aluminum alloy rated at 3000 PSI (207 Bar).

INSTALLATION DIMENSIONS



() Parentheses = Millimeters

HOW TO ORDER

