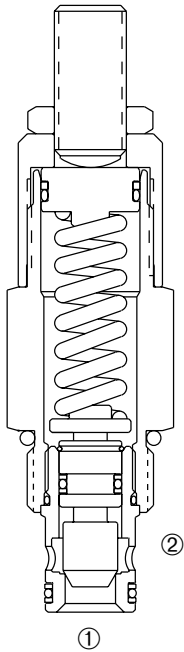


DBRV-100

Adjustable, Bi-Directional Cartridge Relief Valve



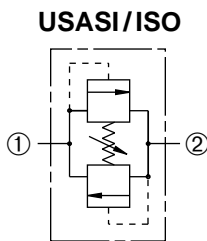
DESCRIPTION

An adjustable, bi-directional poppet type cartridge valve designed to limit pressure in hydraulic circuits.

OPERATION

The DBRV-100 is comprised of two relief valves which prevent flow from ① to ② or ② to ① until the set crack pressure is achieved at either port ① or ②. When the set crack pressure is reached, the poppet unseats allowing flow from ① to ② or ② to ① protecting the circuit from over pressurization.

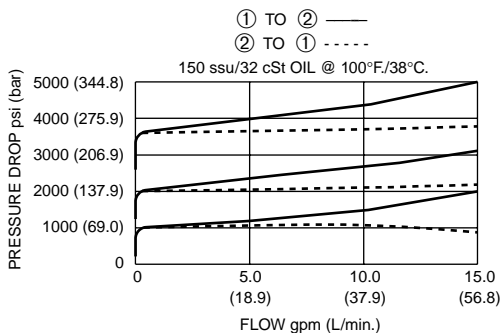
SYMBOL



FEATURES and BENEFITS

- Rapid response to pressure surges.
- Low pressure rise.
- Hardened poppet and seat for long life.
- Hidden adjustment (tamper resistant) option.
- Aluminum knob and disc nut option.
- Adjustment may be locked in place.
- Industry common cavity.
- Compact size.

PRESSURE DROP VS. FLOW



SPECIFICATIONS

Operating Pressure: 3600 PSI (248 Bar)

Flow: See PRESSURE DROP VS. FLOW graph.

Internal Leakage: 5 in.³/min. (82cc/min.) max. at reseal.

Crack Pressure Defined: Determined at .25 GPM (0.9 L/min.)

Reseat Pressure: Nominal 80% of crack pressure.

Spring Ranges:

- 100 to 600 PSI (7 to 41 Bar)
Preset: 300 PSI (21Bar)
- 250 to 2000 PSI (17 to 138 Bar)
Preset: 1000 PSI (69 Bar)
- 600 to 3600 PSI (41 to 248 Bar)
Preset: 2000 PSI (138 Bar)

Temperature: -30° F to +250° F (-35°C to +120° C)

Recommended Filtration: ISO 19/15

Fluids: Mineral-based fluids.

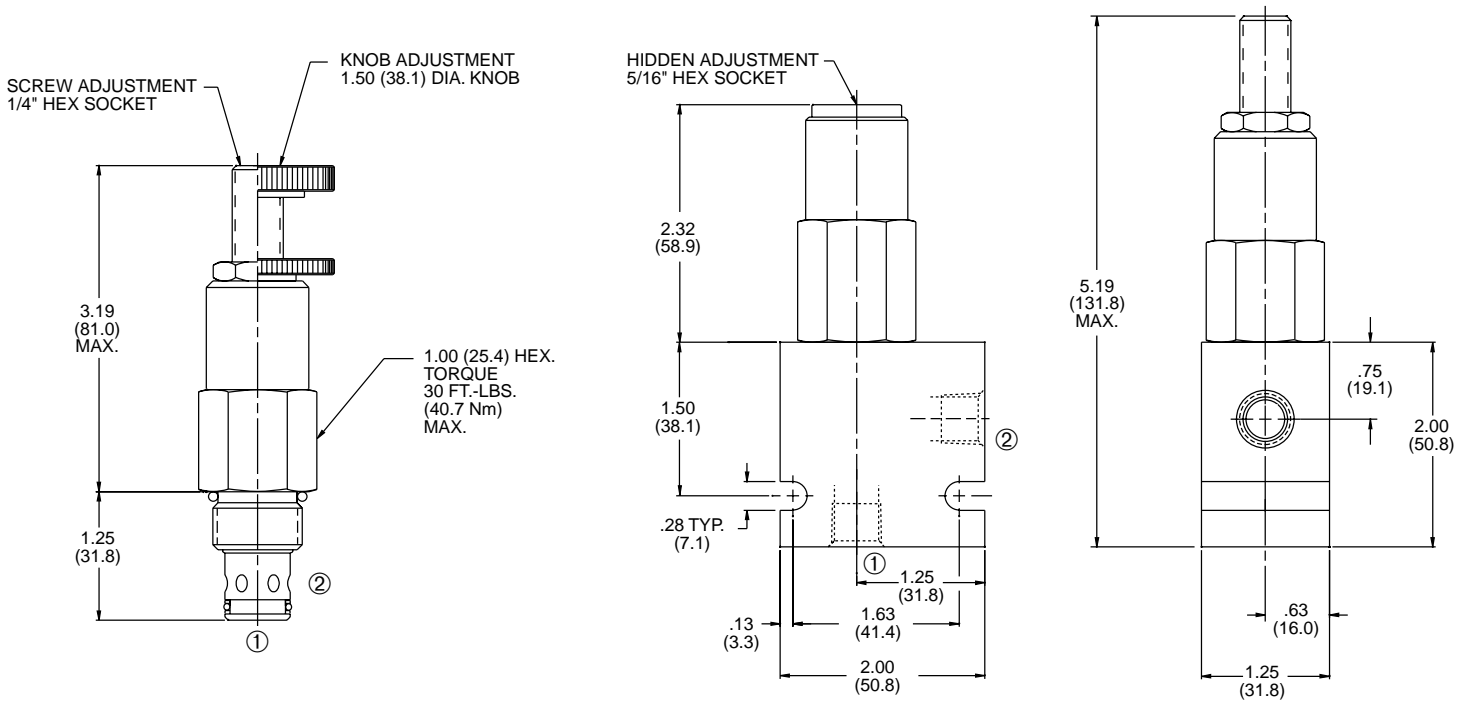
For other fluid compatibility consult factory.

Cavity: 100-2, see page 0.21.

Cavity Tool: See page 0.21.

Body Material: Anodized 6061T6 aluminum alloy rated at 3000 PSI (207 Bar).

INSTALLATION DIMENSIONS



() Parentheses = Millimeters

HOW TO ORDER

