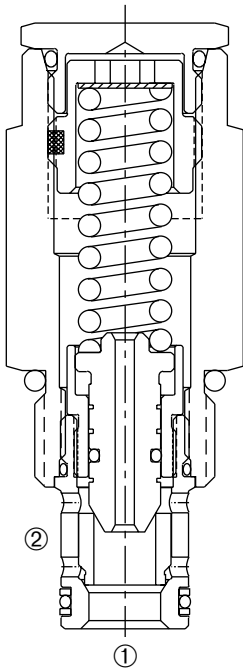


DBRVS-100

Tamper-Resistant, Direct, Bi-Directional Cartridge Relief Valve



DESCRIPTION

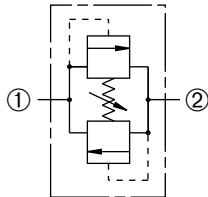
An adjustable, bi-directional poppet type cartridge valve designed to limit pressure in hydraulic circuits.

OPERATION

The DBRVS-100 is comprised of two relief valves which prevent flow from ① to ② or ② to ① until the set crack pressure is achieved at either port ① or ②. When the set crack pressure is reached, the poppet unseats allowing flow from ① to ② or ② to ① protecting the circuit from over pressurization.

SYMBOL

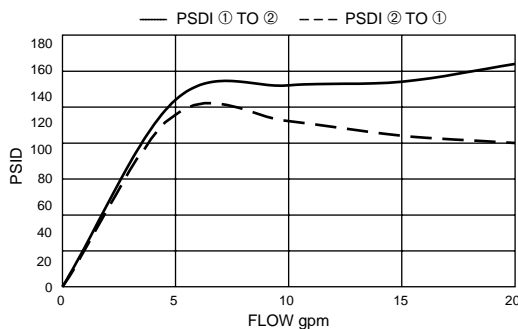
USASI/ISO



FEATURES and BENEFITS

- Rapid response to pressure surges.
- Low pressure rise.
- Hardened poppet and seat for long life.
- Hidden adjustment (tamper resistant).
- Industry common cavity.
- Compact size.

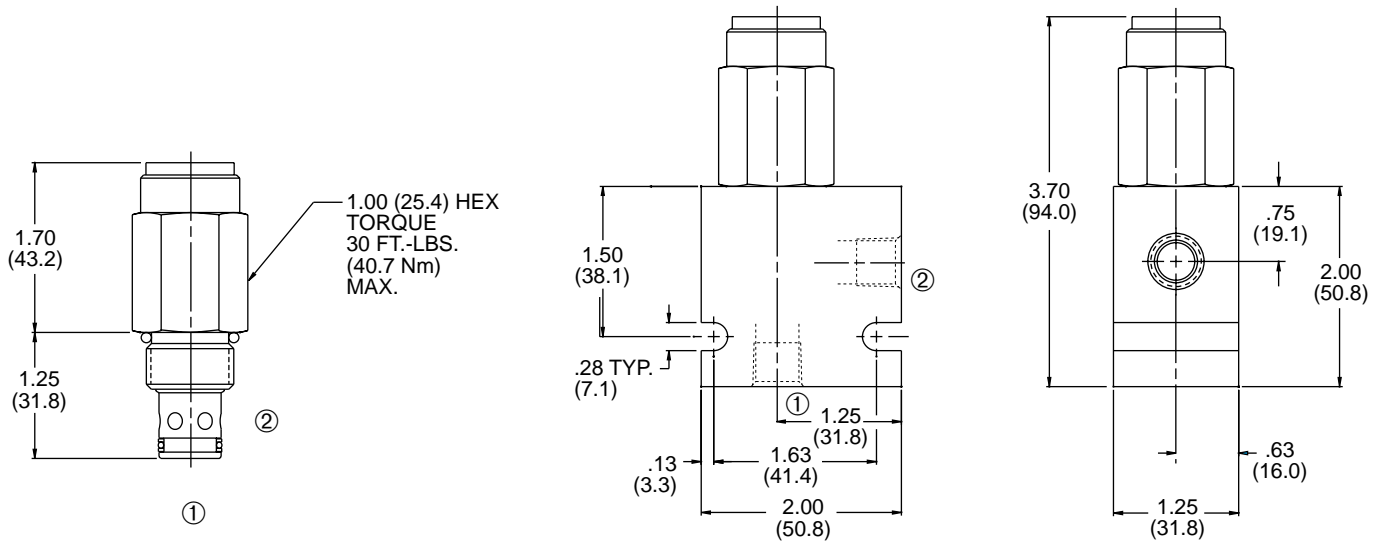
PRESSURE DROP VS. FLOW



SPECIFICATIONS

- Operating Pressure:** 3000 PSI (207 Bar)
- Flow:** See PRESSURE DROP VS. FLOW graph.
- Internal Leakage:** 5 in.³/min. (82cc/min.) max. at reseal.
- Crack Pressure Defined:** Determined at .25 GPM (0.9 L/min.)
- Reseat Pressure:** Nominal 80% of crack pressure.
- Spring Range:** 100 to 2400 PSI (7 to 166 Bar)
Preset: 1000 PSI (69 Bar)
- Temperature:** -30° F to +250° F (-35° C to +120° C)
- Recommended Filtration:** ISO 19/15
- Fluids:** Mineral-based fluids.
For other fluid compatibility consult factory.
- Cavity:** 100-2, see page 0.21.
- Cavity Tool:** See page 0.21.
- Body Material:** Anodized 6061T6 aluminum alloy rated at 3000 PSI (207 Bar).

INSTALLATION DIMENSIONS



() Parentheses = Millimeters

HOW TO ORDER

