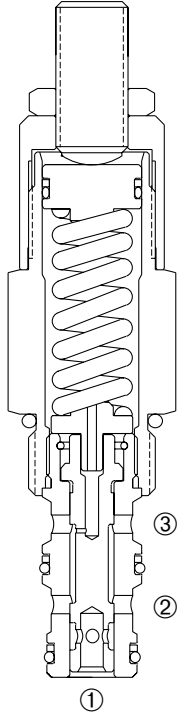


DPS2-100

Adjustable, Internally-Piloted, Internally-Drained Cartridge Sequence Valve



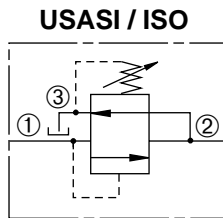
DESCRIPTION

An adjustable, internally-piloted spool cartridge valve designed to direct oil to a circuit when a predetermined pressure has been reached.

OPERATION

The DPS2-100 in the steady state allows flow from ② to ③ with ① blocked. When the preset pressure at ① is achieved, the spool shifts to allow flow from ① to ②.

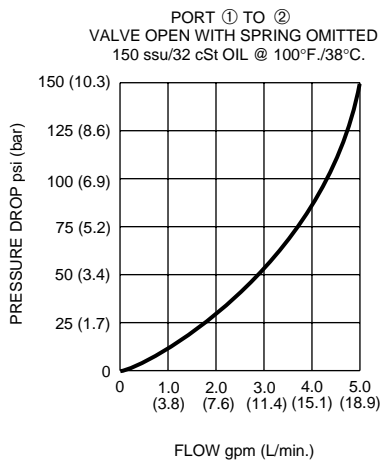
SYMBOL



FEATURES and BENEFITS

- Variety of pressure ranges.
- Hardened precision spool and sleeve for long life.
- Hidden adjustment (tamper resistant) option.
- Aluminum knob and disc nut option.
- Adjustment may be locked in place.
- Industry common cavity.
- Compact size.

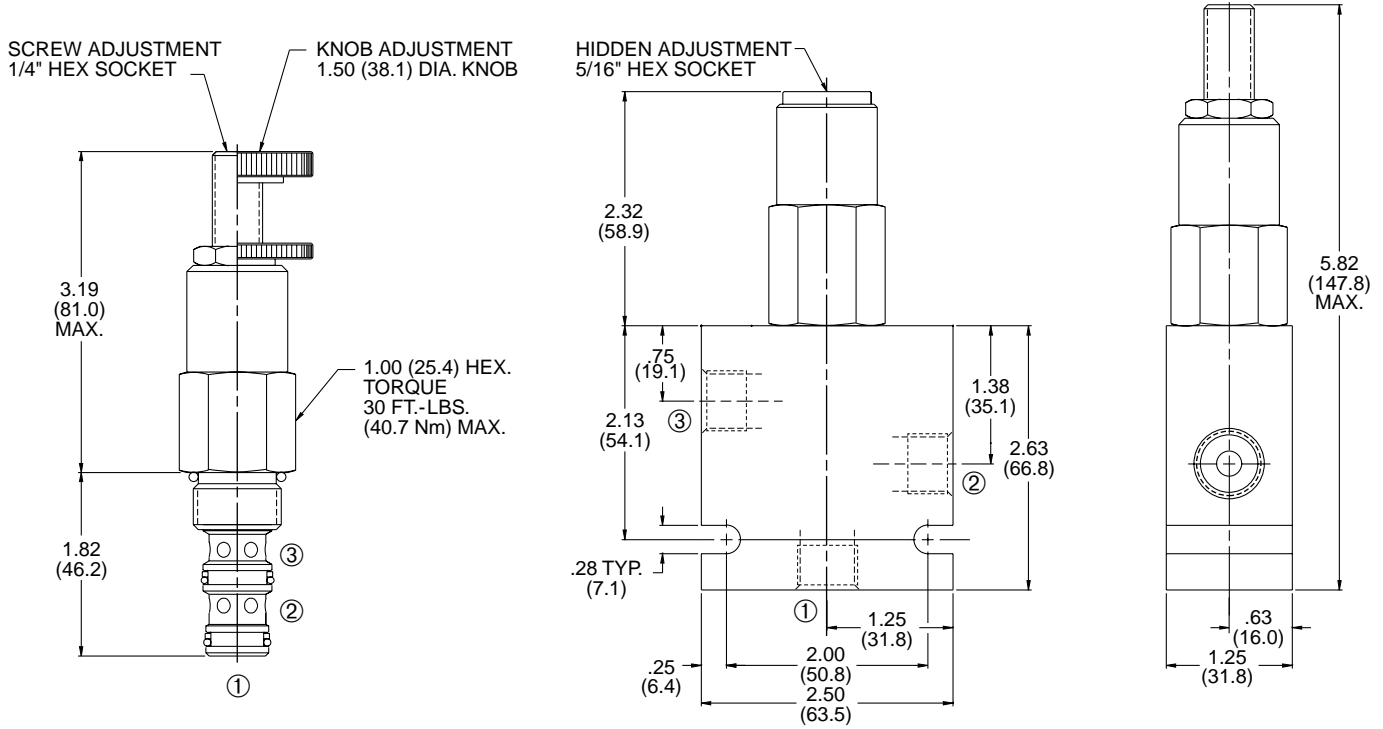
PRESSURE DROP VS. FLOW



SPECIFICATIONS

- Operating Pressure:** 3000 PSI (207 Bar)
- Flow:** See PRESSURE DROP VS. FLOW graph.
- Internal Leakage:** 5 in.³/min. (82 cc/min.) max. at 3000 PSI (207 Bar)
- Spring Range:** 400 to 2400 PSI (28 to 166 Bar)
Preset: 2000 PSI (138 Bar)
- Temperature:** -30°F to +250°F (-35°C to +120°C)
- Recommended Filtration:** ISO 19/15
- Fluids:** Mineral-based fluids.
For other fluid compatibility, consult factory.
- Cavity:** 100-3, see page 0.21
- Cavity Tool:** See page 0.21
- Body Material:** Anodized 6061T6 aluminum alloy rated at 3000 PSI (207 Bar).

INSTALLATION DIMENSIONS



() Parentheses = Millimeters

HOW TO ORDER

