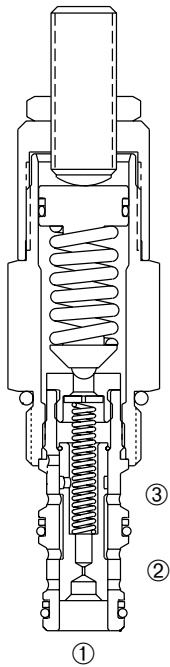


DPSK-100

Adjustable, Pilot Operated, Kick-Down Cartridge Sequence Valve



DESCRIPTION

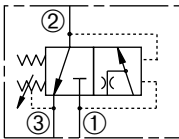
An adjustable, pilot operated spool cartridge valve designed to direct oil to a circuit when a predetermined pressure has been reached.

OPERATION

The DPSK-100 in steady state blocks flow at ① while allowing flow from ② to ③. When the preset pressure at ① is achieved the pilot section opens. This pilot flow creates a pressure differential across the spool, which causes the spool to shift to allow flow from ① to ②. The spool will not shift back (kick-down) until pressure at ② falls below a predetermined pressure.

SYMBOL

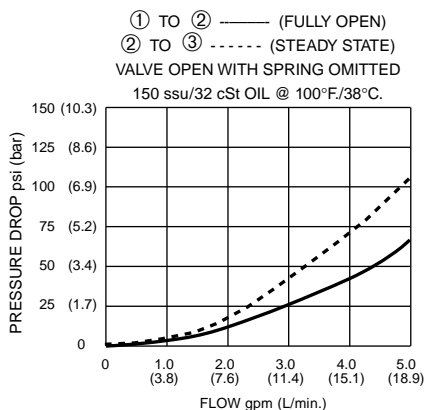
USASI/ISO



FEATURES and BENEFITS

- Variety of pressure ranges.
- Hardened precision spool and sleeve for long life.
- Hidden adjustment (tamper resistant).
- Aluminum knob and disc nut.
- Adjustments may be locked in place.
- Industry common cavity.
- Compact size.

PRESSURE DROP VS. FLOW



SPECIFICATIONS

Operating Pressure: 3000 PSI (207 Bar)

Flow: See PRESSURE DROP VS. FLOW graph.

Internal Leakage: 5 in.³/min. (82 cc/min.) max. at 3000 PSI (207 Bar)

Spring Ranges:
 300 to 500 PSI (21 to 34 Bar)
 Preset: 400 PSI (28 Bar)
 350 to 3000 PSI (24 to 207 Bar)
 Preset: 2000 PSI (138 Bar)

Re-set Spring Pressure: 120 PSI (8 Bar)

Temperature: -30° F to +250° F (-35°C to +120° C)

Recommended Filtration: ISO 19/15

Fluids: Mineral-based fluids.

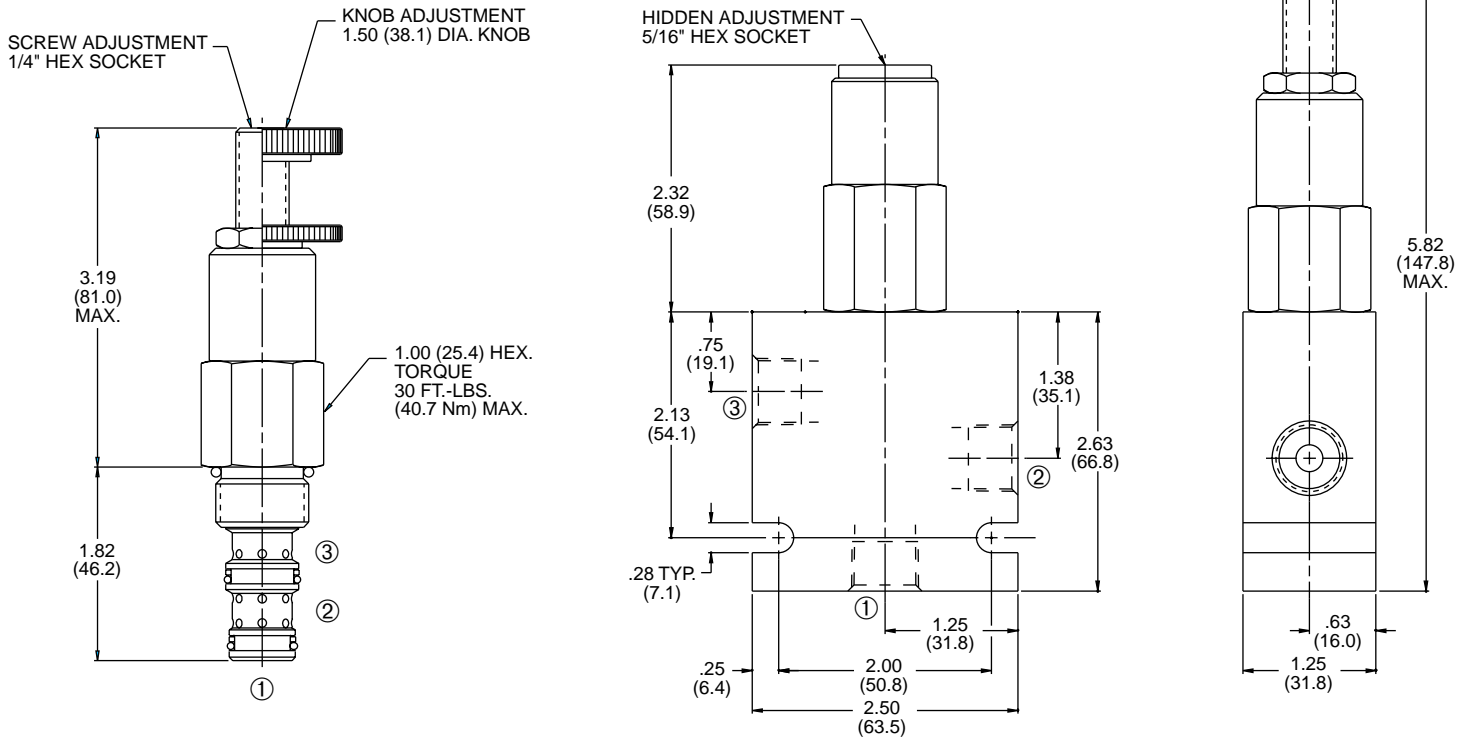
For other fluid compatibility consult factory.

Cavity: 100-3, see page 0.21.

Cavity Tool: See page 0.21.

Body Material: Anodized 6061T6 aluminum alloy rated at 3000 PSI (207 Bar).

INSTALLATION DIMENSIONS



() Parentheses = Millimeters

HOW TO ORDER

