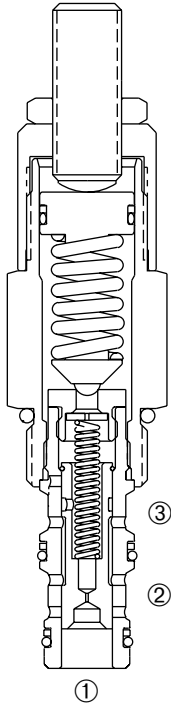


## DPSK2-100

### Adjustable, Pilot Operated, Kick-Down Cartridge Sequence Valve



#### DESCRIPTION

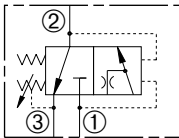
An adjustable, pilot operated spool cartridge valve designed to direct oil to a circuit when a predetermined pressure has been reached.

#### OPERATION

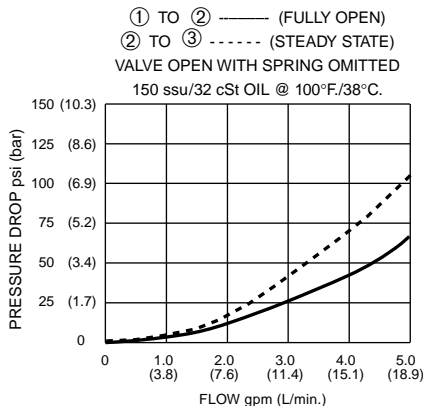
The DPSK2-100 in steady state blocks flow at ① while allowing flow from ② to ③. When the preset pressure at ① is achieved the pilot section opens. This pilot flow creates a pressure differential across the spool, which causes the spool to shift to allow flow from ① to ②. The spool will not shift back (kick-down) until pressure at ② falls below a predetermined pressure.

#### SYMBOLS

##### USASI/ISO



#### PRESSURE DROP VS. FLOW



#### FEATURES and BENEFITS

- Higher kick-down pressure than DPSK-100. (See page 4.49)
- Variety of pressure ranges.
- Hardened precision spool and sleeve for long life.
- Hidden adjustment (tamper resistant) option.
- Aluminum knob and disc nut option.
- Adjustments may be locked in place.
- Industry common cavity.
- Compact size.

#### SPECIFICATIONS

**Operating Pressure:** 3000 PSI (207 Bar)

**Flow:** See PRESSURE DROP VS. FLOW graph.

**Internal Leakage:** 5 in.<sup>3</sup>/min. (82 cc/min.) max. at 3000 PSI (207 Bar)

**Spring Range:** 350 to 3000 PSI (24 to 207 Bar)

Preset: 1200 PSI ( 83 Bar)

**Re-set Spring Pressure:** 300 PSI (21 Bar)

**Temperature:** -30° F to +250° F (-35°C to +120° C)

**Recommended Filtration:** ISO 19/15

**Fluids:** Mineral-based fluids.

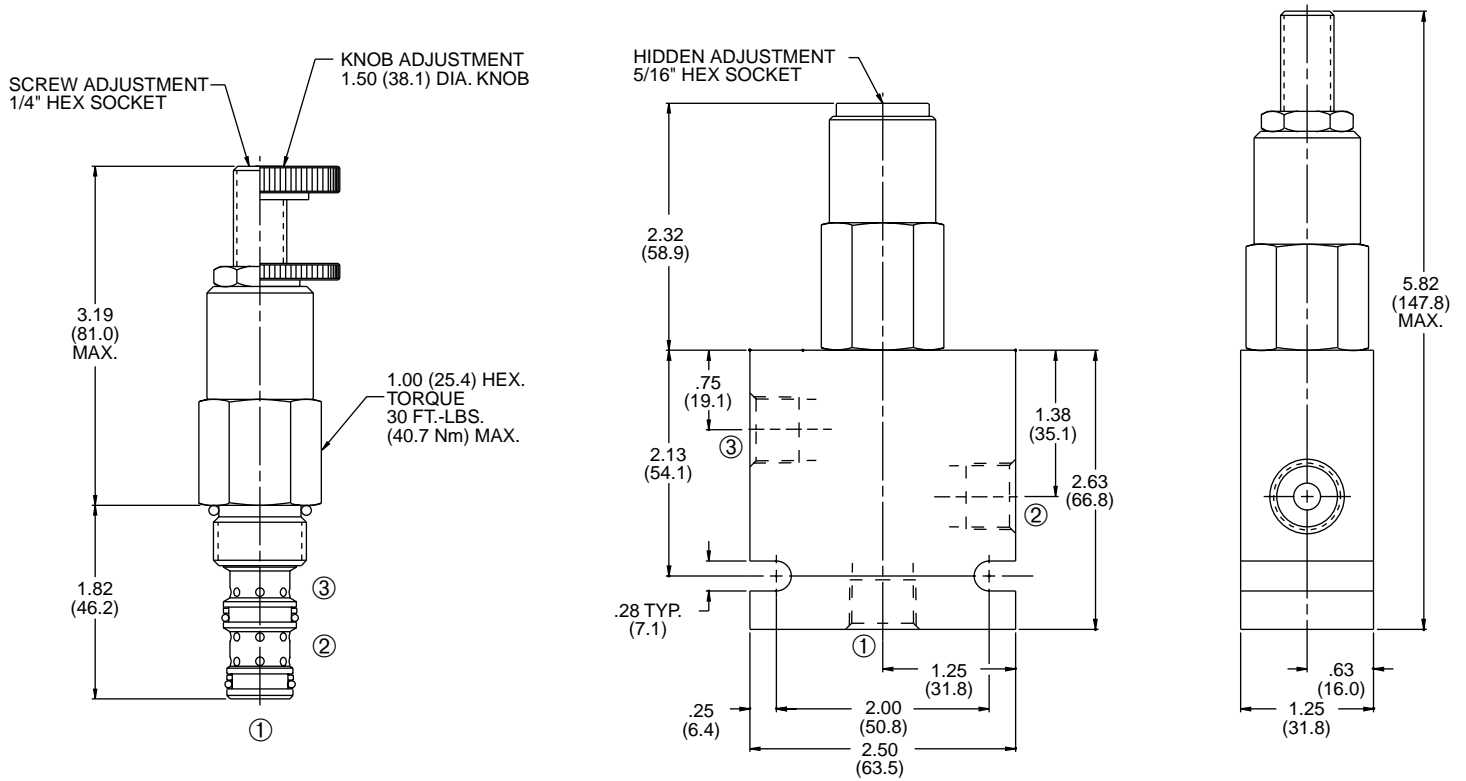
For other fluid compatibility consult factory.

**Cavity:** 100-3, see page 0.21.

**Cavity Tool:** See page 0.21.

**Body Material:** Anodized 6061T6 aluminum alloy rated at 3000 PSI (207 Bar).

## INSTALLATION DIMENSIONS



( ) Parentheses = Millimeters

## HOW TO ORDER

