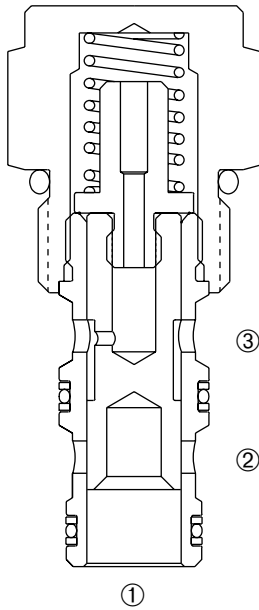


DDPS-100

Cartridge Differential Pressure Sensing Valve



DESCRIPTION

A fixed spool cartridge valve designed to direct oil to circuit when a predetermined pressure differential has been reached.

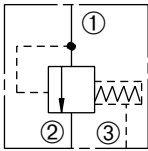
OPERATION

The DDPS-100 in steady state blocks flow from ① to ②.

When the predetermined pressure differential between ① and ③ is achieved, the spool shifts to allow flow from ① to ②.

SYMBOL

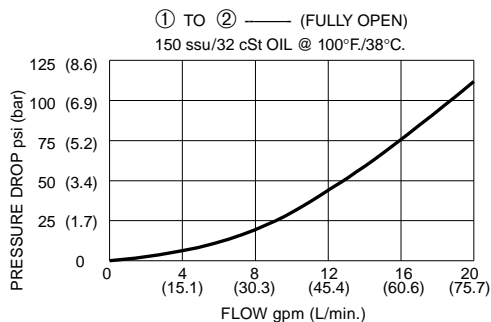
USASI/ISO



FEATURES and BENEFITS

- Hardened precision spool and sleeve for long life.
- Pressure differential setting options.
- Industry common cavity.
- Compact size.

PRESSURE DROP VS. FLOW



SPECIFICATIONS

Operating Pressure: 3000 PSI (207 Bar)

Flow: See PRESSURE DROP VS. FLOW graph.

Internal Leakage: 5 in.³/min. (82 cc/min.) max. at 3000 PSI (207 Bar)

Differential Pressure Settings: 40 PSI (2.8 Bar)
75 PSI (5.2 Bar)
100 PSI (6.9 Bar)
150 PSI (10.3 Bar)

Temperature: -30° F to +250° F (-35°C to +120° C)

Recommended Filtration: ISO 19/15

Fluids: Mineral-based fluids.

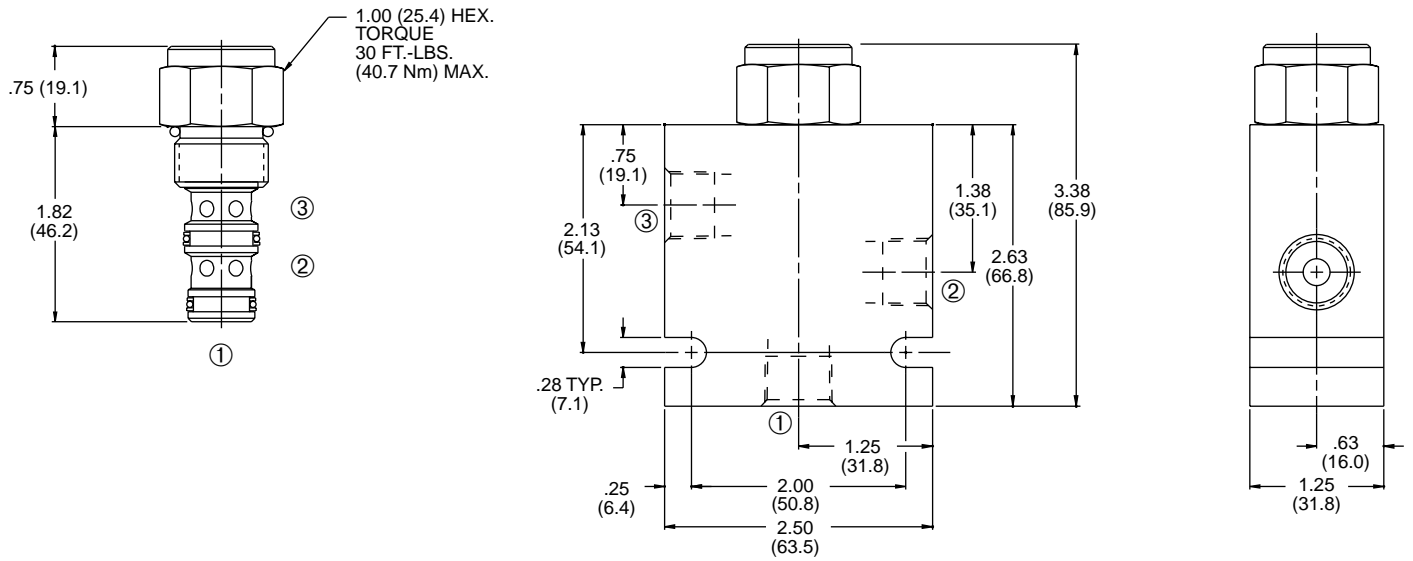
For other fluid compatibility consult factory.

Cavity: 100-3, see page 0.21.

Cavity Tool: See page 0.21.

Body Material: Anodized 6061T6 aluminum alloy rated at 3000 PSI (207 Bar).

INSTALLATION DIMENSIONS



() Parentheses = Millimeters

HOW TO ORDER

