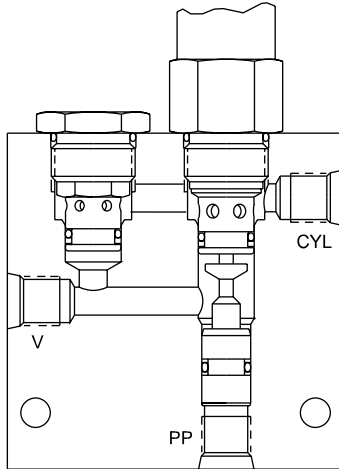


DCB-08S

Counterbalance Cartridge Valve Assembly



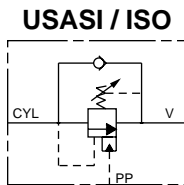
DESCRIPTION

An externally-piloted counterbalance assembly that allows free flow to the cylinder and will prevent the cylinder from traveling faster than the pump flow will allow.

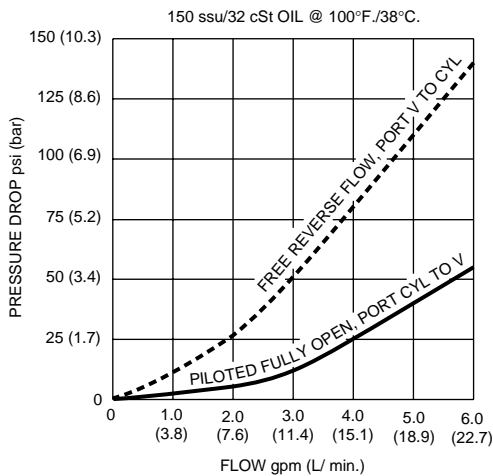
OPERATION

The DCB-08S allows free flow from (V) to (CYL). When the preset pressure at (PP) is achieved, fluid will flow from (CYL) to (V). If the cylinder attempts to travel faster than the pump flow, the pilot pressure will decrease at (PP) allowing the relief valve to restrict the flow preventing cylinder runaway. The pilot piston area to poppet seat area ratio is 2.7 to 1.

SYMBOL



PRESSURE DROP VS. FLOW



FEATURES and BENEFITS

- Acts as circuit relief.
- Can be mounted at cylinder for safest operation.
- Optional pressure ranges.
- Adjustable pressure setting.
- Compact size.

SPECIFICATIONS

Operating Pressure: 3000 PSI (207 Bar)
Flow: See PRESSURE DROP VS. FLOW graph.
Internal Leakage: 5 drops/min. max. at 3000 PSI (207 Bar)
Spring Ranges: 300 to 2000 PSI (21 to 138 Bar)
 Preset: 1500 PSI (103 Bar)
 1500 to 3000 PSI (103 to 207 Bar)
 Preset: 2500 PSI (172 Bar)

Pilot Ratio: 2.7 to 1

Temperature: -30°F to +250°F (-35°C to +120°C)

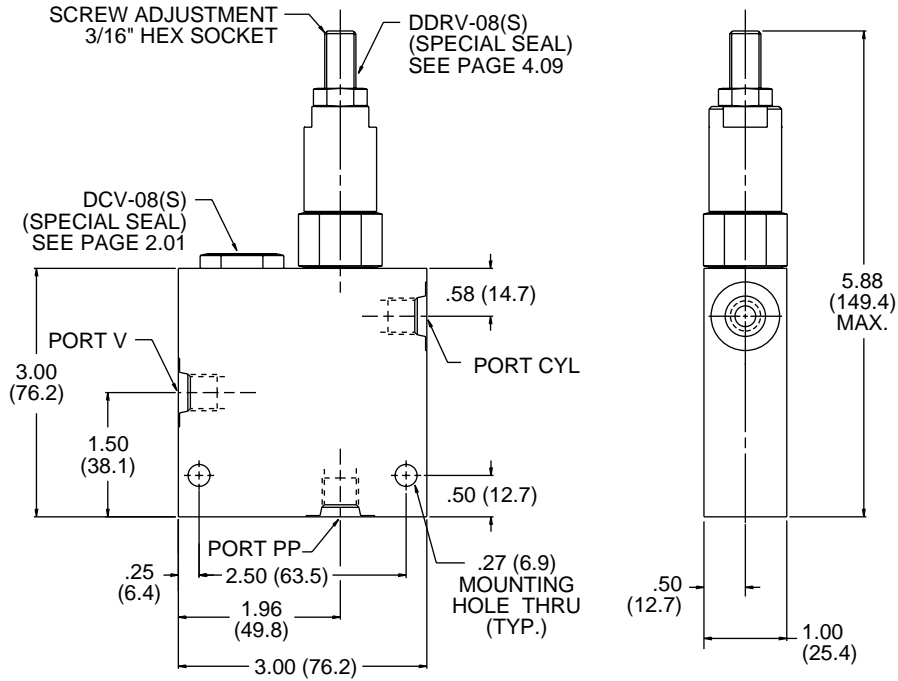
Recommended Filtration: ISO 16/12

Fluids: Mineral-based fluids.

For other fluid compatibility, consult factory.

Body Material: Anodized 6061T6 aluminum alloy rated at 3000 PSI (207 Bar).

INSTALLATION DIMENSIONS



() Parentheses = Millimeters

HOW TO ORDER

