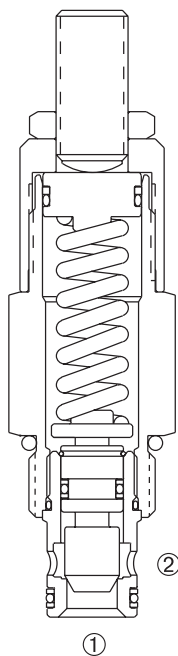
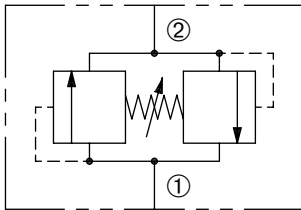


DBRV-100

Adjustable, Bi-Directional
Relief Valve

SERIES 10



DESCRIPTION

An adjustable, bi-directional poppet type cartridge valve designed to limit pressure in hydraulic circuits.

OPERATION

The DBRV-100 is comprised of two relief valves which prevent flow from ① to ② or ② to ① until the set crack pressure is achieved at either port ① or ②. When the set crack pressure is reached, the poppet unseats allowing flow from ① to ② or ② to ① protecting the circuit from over pressurization.

FEATURES and BENEFITS

- Rapid response to pressure surges.
- Low pressure rise.
- Hardened poppet and seat for long life.
- Hidden adjustment (tamper resistant) option.
- Aluminum knob and disc nut option.
- Adjustment may be locked in place.
- Industry common cavity.
- Compact size.

SPECIFICATIONS

Operating Pressure: 3600 PSI (248 Bar)

Flow: See PRESSURE DROP VS. FLOW graph.
Nominal Flow 15 GPM (56.8 L/min).

Internal Leakage: 5 in.³/min. (82cc/min.) max. at reseal.

Crack Pressure Defined: Determined at .25 gpm (0.9 L/min.)

Reseat Pressure: Nominal 80% of crack pressure.

Spring Range: 100 to 600 PSI (7 to 41 Bar)

Preset: 300 PSI (21 Bar)

250 to 2000 PSI (17 to 138 Bar)

Preset: 1000 PSI (69 Bar)

900 to 3600 PSI (62 to 248 Bar)

Preset: 2000 PSI (138 Bar)

Temperature: -30°F to +250°F (-35°C to +120°C).

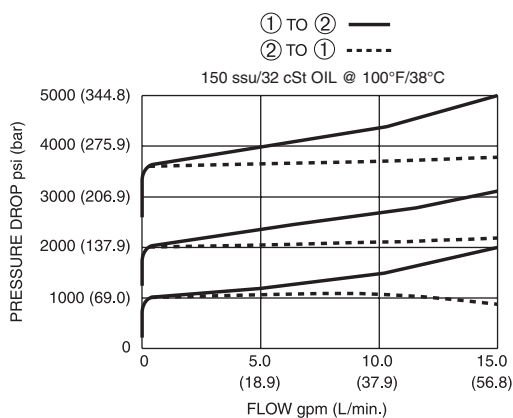
Recommended Filtration: ISO 20/18/14

Fluids: Mineral-based fluids. For other fluid compatibility, consult factory.

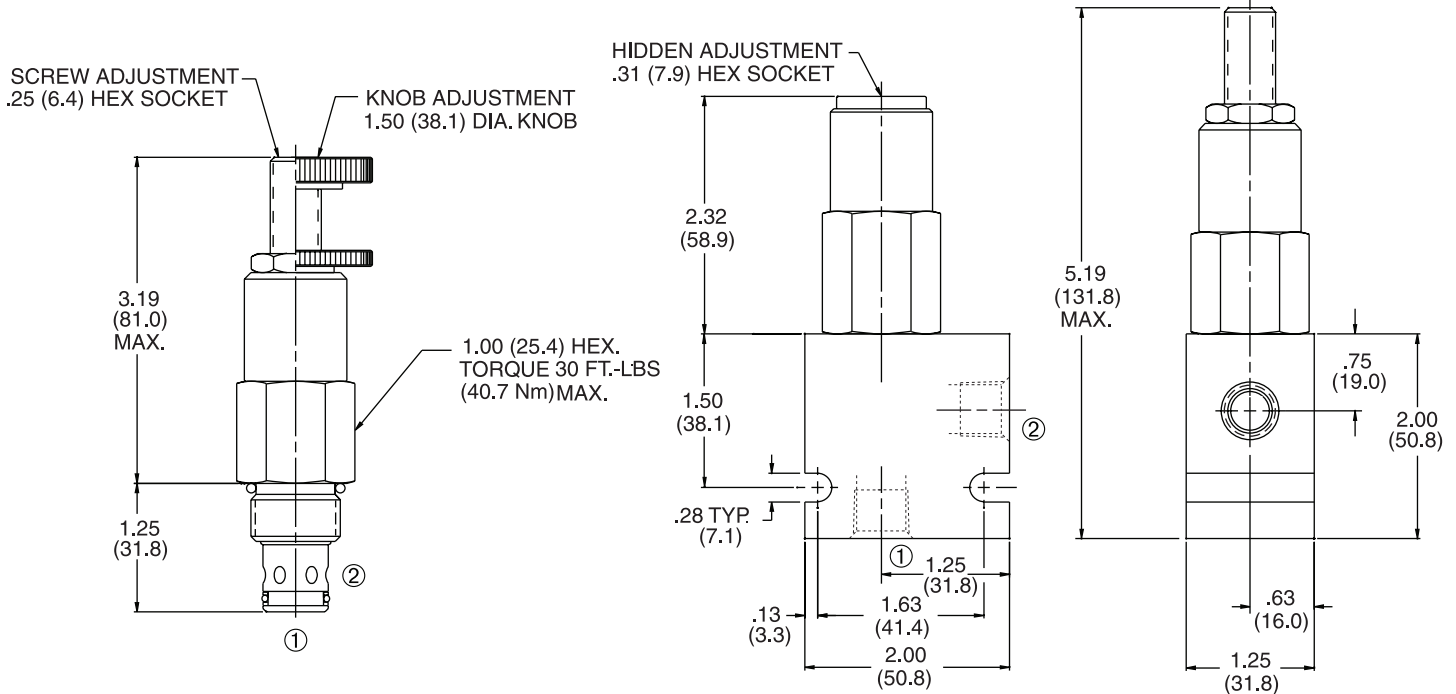
Cavity/Cavity Tool: 100-2, see page 11.10.2

In-Line Body Material: Anodized 6061T6 aluminum alloy rated at 3000 PSI (207 Bar).

PRESSURE DROP VS. FLOW

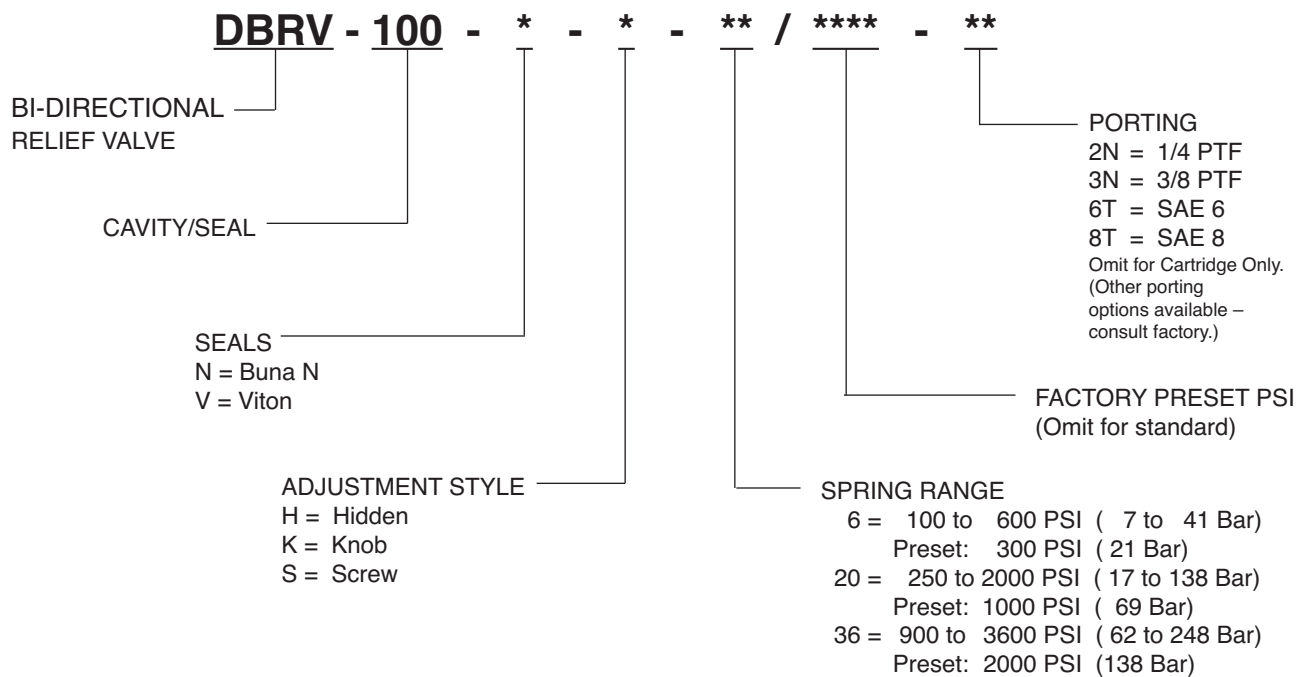


INSTALLATION DIMENSIONS



() Parentheses = Millimeters

HOW TO ORDER



SOLENOID
CHECK
MOTION CONTROL
FLOW CONTROL
RELIEF
PRESSURE CONTROL
SEQUENCE
SHUTTLE
DIRECTIONAL VALVES
ACCESSORIES
TECHNICAL DATA