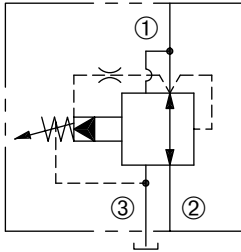


# DPRR-080

Adjustable, Pilot-Operated,  
Pressure Reducing/Relieving Valve

## SERIES 8



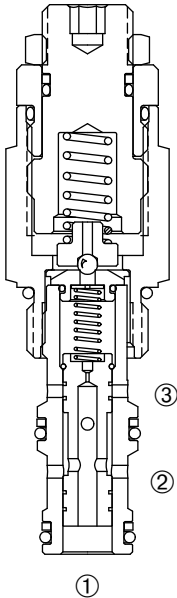
### DESCRIPTION

An adjustable, direct-acting spool cartridge valve designed to regulate pressure in secondary circuits.

### OPERATION

The DPRR-080 in steady state will allow bi-directional flow between ① and ② with spring chamber ③ vented. When the preset pressure at ① is achieved, the spool throttles to regulate pressure at ① by restricting flow at ②.

The valve will relieve ① to ③.



### FEATURES and BENEFITS

- Hardened precision spool and sleeve for long life.
- Variety of pressure ranges.
- High accuracy of pilot operated design.
- Adjustment prevents spring from going solid.
- Adjustment may be locked in place.
- Tamper resistant option.
- Industry common cavity.
- Compact size.

### SPECIFICATIONS

**Operating Pressure:** 5000 PSI (345 Bar)

**Flow:** See PRESSURE DROP VS. FLOW graph  
Nominal flow 5 GPM (19.0 l/min)

**Internal Leakage:** 5 in<sup>3</sup>/min (82 cc/min) max. at 3000 PSI (207 Bar)

**Spring Range:** 300 to 5000 PSI (20 to 345 Bar)

Preset (See HOW TO ORDER)

**Temperature:** -30°F to +250°F (-35°C to +120°C)

**Recommended Filtration:** ISO 19/15

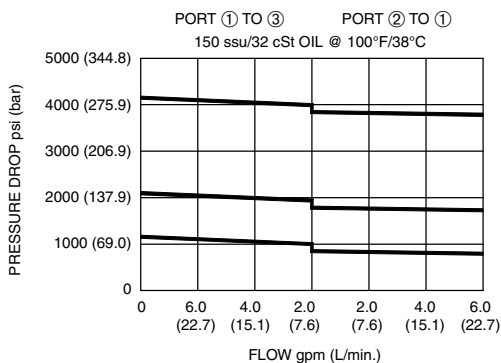
**Fluids:** Mineral-based fluids.

For other fluid compatibility, consult factory.

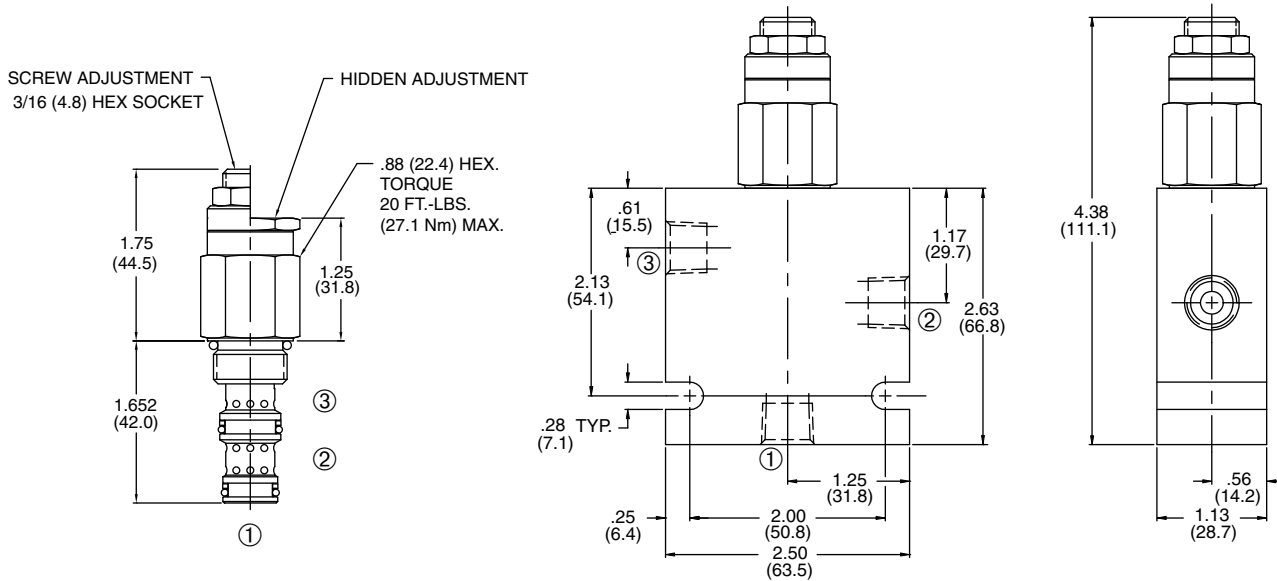
**Cavity/Cavity Tool:** 080-3, see page 11.08.3

**In-Line Body Material:** Anodized 6061T6 aluminum  
allow rated at 3000 PSI (207 Bar).

### PRESSURE DROP VS. FLOW



## INSTALLATION DIMENSIONS



( ) Parentheses = Millimeters

## HOW TO ORDER

### DPRR - 080 - \* - \* - \*\* / \*\*\*\* - \*\*

REDUCING/RELIEVING  
VALVE

CAVITY/SEAL

SEALS

N = Buna N

V = Viton

U = Urethane

ADJUSTMENT STYLE

S = SCREW

H = HIDDEN (TAMPER RESISTANT)

PORTING

2N = 1/4 PTF

3N = 3/8 PTF

6T = SAE 6

8T = SAE 8

Omit for cartridge only.

(Other porting options  
available – consult factory.)

FACTORY PRESET PSI

50 PSI increments

(Omit for Std.)

SPRING RANGE

20 = 300 to 2000 PSI (20 to 138 Bar)

Preset: 300 PSI (20 Bar)

40 = 1800 to 4000 PSI (124 to 276 Bar)

Preset: 3000 PSI (207 Bar)

50 = 2000 to 5000 PSI (138 to 345 Bar)

Preset: 4000 PSI (276 Bar)

“U” Urethane option required for pressures above 3000 PSI (207 Bar)