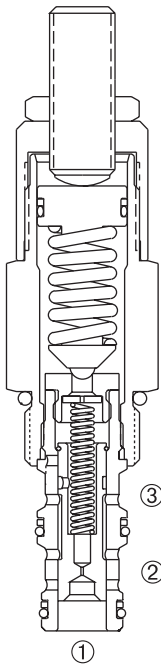
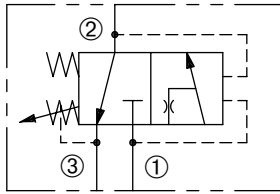


# DPSK-100 (Reset 120 PSI)

Adjustable, Pilot-Operated  
Kick-Down Sequence Valve

## SERIES 10



### DESCRIPTION

An adjustable, pilot-operated spool cartridge valve designed to direct oil to a circuit when a predetermined pressure has been reached.

### OPERATION

The DPSK-100 in the steady state blocks flow at ① while allowing flow from ② to ③. When the preset pressure at ① is achieved, the pilot section opens. This pilot flow creates a pressure differential across the spool, which causes the spool to shift to allow flow from ① to ②. The spool will not shift back (kick-down) until pressure at ② falls below a predetermined pressure.

### FEATURES and BENEFITS

- Variety of pressure ranges.
- Hardened precision spool and sleeve for long life.
- Hidden adjustment (tamper resistant) option.
- Aluminum knob and disc nut option.
- Adjustment may be locked in place.
- Industry common cavity.
- Compact size.

### SPECIFICATIONS

**Operating Pressure:** 3000 PSI (207 Bar)

**Flow:** See PRESSURE DROP VS. FLOW graph.

**Internal Leakage:** 5 in.<sup>3</sup>/min. (82 cc/min.) max. at 3000 PSI (207 Bar)

**Spring Range:** 300 to 500 PSI ( 21 to 34 Bar)

Preset: 400 PSI ( 28 Bar)

350 to 3000 PSI ( 24 to 207 Bar)

Preset: 2000 PSI (138 Bar)

**Reset Spring Pressure:** 120 PSI (8 Bar)

**Temperature:** -30°F to +250°F (-35°C to +120°C)

**Recommended Filtration:** ISO 20/18/14

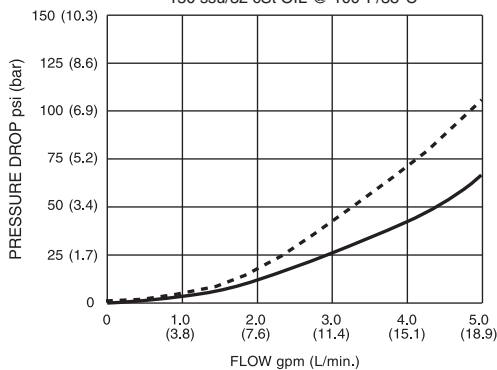
**Fluids:** Mineral-based fluids. For other fluid compatibility, consult factory.

**Cavity/Cavity Tool:** 100-3, see page 11.10.3

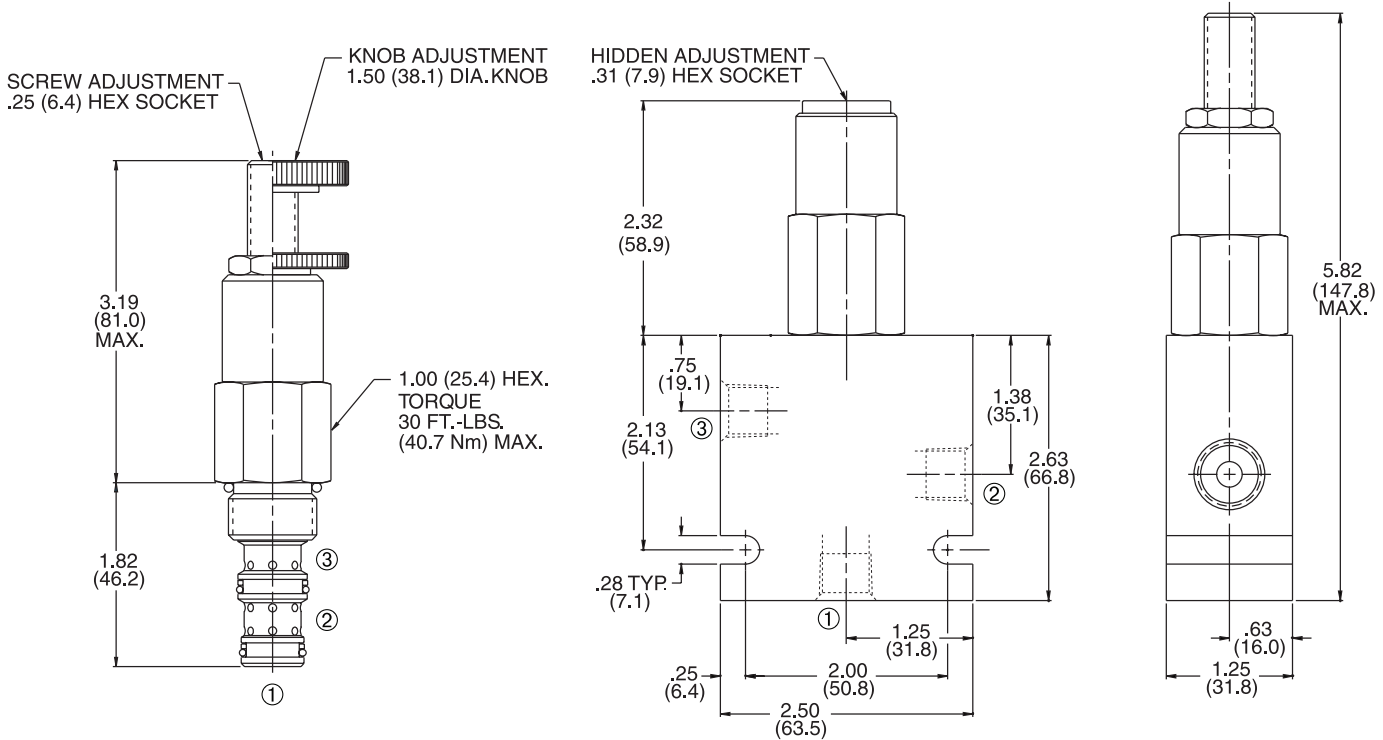
**In-Line Body Material:** Anodized 6061T6 aluminum alloy rated at 3000 PSI (207 Bar).

### PRESSURE DROP VS. FLOW

① TO ② — (FULLY OPEN)  
② TO ③ - - - (STEADY STATE)  
VALVE OPEN WITH SPRING OMITTED  
150 ssu/32 cSt OIL @ 100°F/38°C

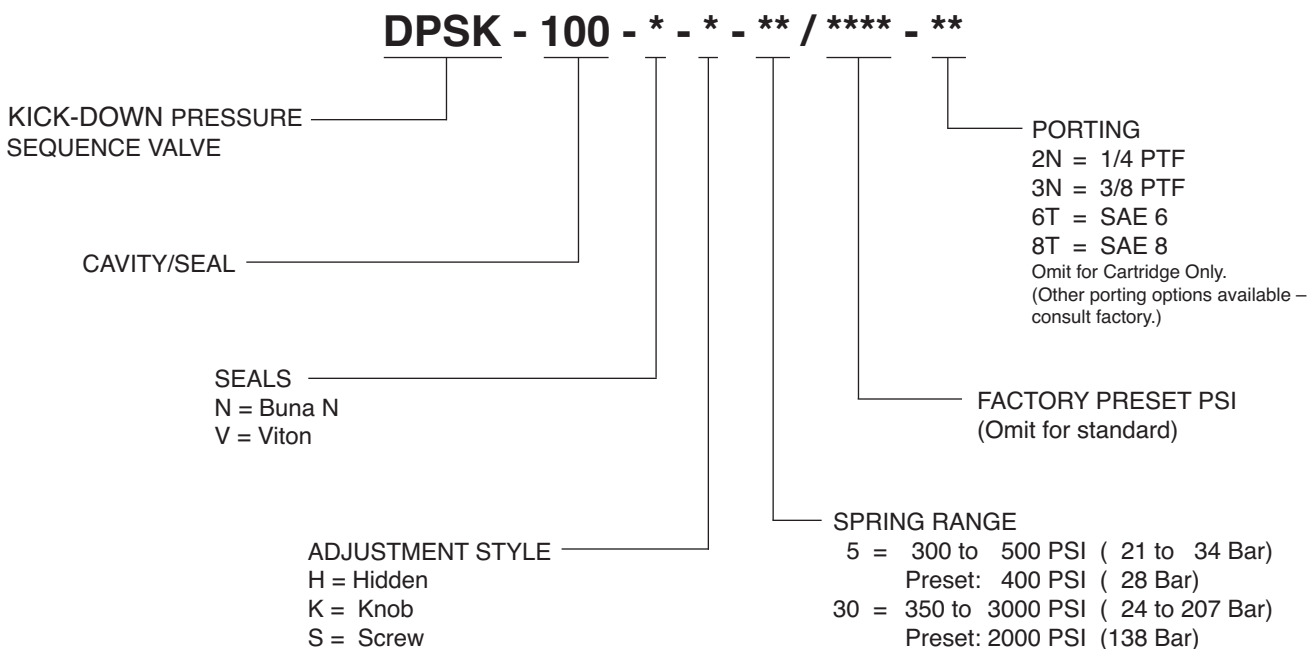


**INSTALLATION DIMENSIONS**



( ) Parentheses = Millimeters

**HOW TO ORDER**



SOLENOID  
CHECK  
MOTION CONTROL  
FLOW CONTROL  
RELIEF  
PRESSURE CONTROL  
SEQUENCE  
SHUTTLE  
DIRECTIONAL VALVES  
ACCESSORIES  
TECHNICAL DATA