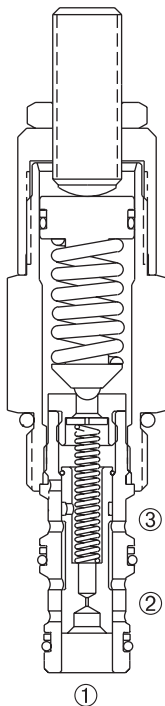
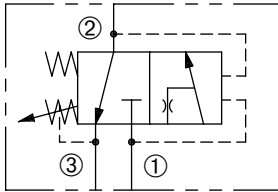


DPSK2-100 (Reset 300 PSI)

Adjustable, Pilot-Operated
Kick-Down Sequence Valve

SERIES 10



DESCRIPTION

An adjustable, pilot-operated spool cartridge valve designed to direct oil to a circuit when a predetermined pressure has been reached.

OPERATION

The DPSK2-100 in the steady state blocks flow at ① while allowing flow from ② to ③. When the preset pressure at ① is achieved, the pilot section opens. This pilot flow creates a pressure differential across the spool, which causes the spool to shift to allow flow from ① to ②. The spool will not shift back (kick-down) until pressure at ② falls below a predetermined pressure.

FEATURES and BENEFITS

- Higher kick-down pressure than DPSK-100 (see page 7.05.1).
- Variety of pressure ranges.
- Hardened precision spool and sleeve for long life.
- Hidden adjustment (tamper resistant) option.
- Aluminum knob and disc nut option.
- Adjustment may be locked in place.
- Industry common cavity.
- Compact size.

SPECIFICATIONS

Operating Pressure: 3000 PSI (207 Bar)

Flow: See PRESSURE DROP VS. FLOW graph.

Internal Leakage: 5 in.³/min. (82 cc/min.) max. at 3000 PSI (207 Bar)

Spring Ranges: 350 to 3000 PSI (24 to 207 Bar)

Preset: 1200 PSI (83 Bar)

Reset Spring Pressure: 300 PSI (21 Bar)

Temperature: -30°F to +250°F (-35°C to +120°C)

Recommended Filtration: ISO 20/18/14

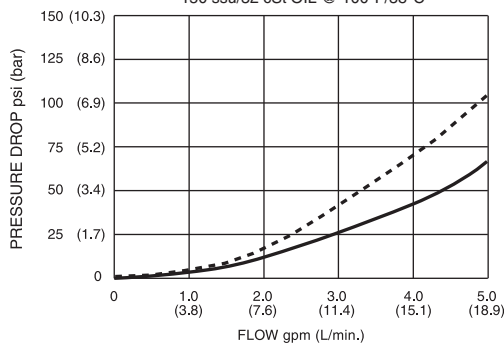
Fluids: Mineral-based fluids. For other fluid compatibility, consult factory.

Cavity/Cavity Tool: 100-3, see page 11.10.3

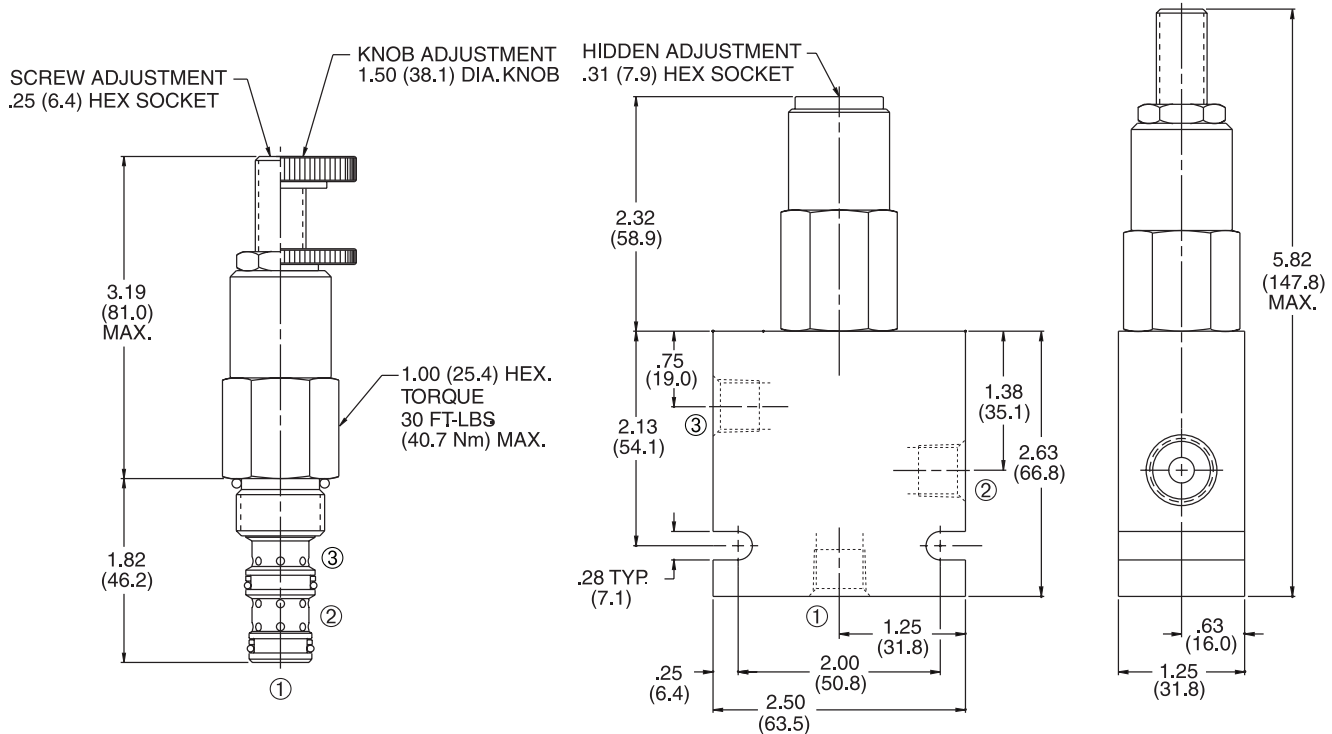
In-Line Body Material: Anodized 6061T6 aluminum alloy rated at 3000 PSI (207 Bar).

PRESSURE DROP VS. FLOW

① TO ② — (FULLY OPEN)
② TO ③ - - - (STEADY STATE)
VALVE OPEN WITH SPRING OMITTED
150 ssu/32 cSt OIL @ 100°F/38°C

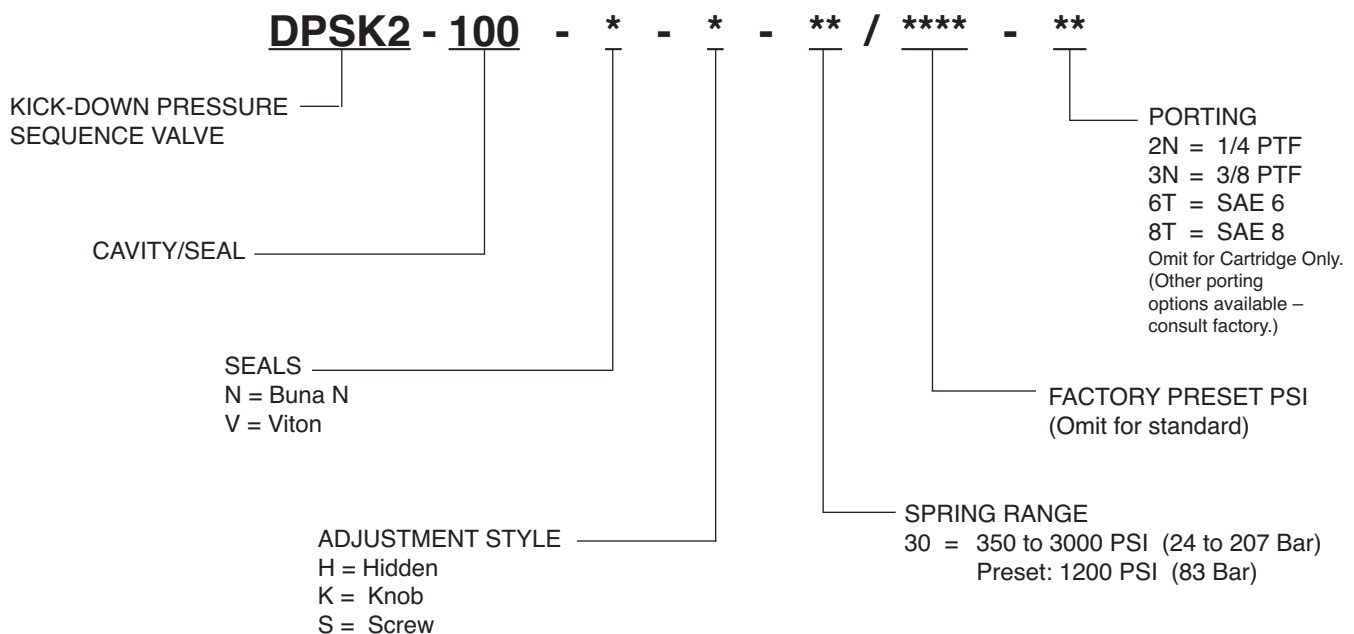


INSTALLATION DIMENSIONS



() Parentheses = Millimeters

HOW TO ORDER



SOLENOID
CHECK
MOTION CONTROL
FLOW CONTROL
RELIEF
PRESSURE CONTROL
SEQUENCE
SHUTTLE
DIRECTIONAL VALVES
ACCESSORIES
TECHNICAL DATA