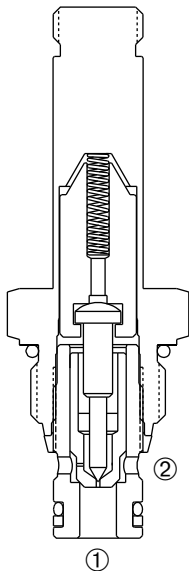
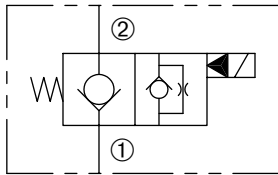


DSV-080-2NCP

Normally-Closed, Two-Way, Two-Position,
Pilot-Operated Solenoid Valve



SERIES 8



DESCRIPTION

A cartridge valve designed with positive shut off to be used in load holding applications.

OPERATION

When de-energized, the DSV-080-2NCP acts as a check valve, allowing flow from ① to ②, while blocking flow from ② to ①. When energized, the poppet lifts to open the ② to ① flow path.

Operation of Manual Override Option: To override, push button in, twist counterclockwise and release. In this position, the valve will remain open. To return to normal operation, push button in, twist clockwise and release. Override will be detented in this position. **Note:** Pull only to override and release to return option available. See page 1.01.3

FEATURES and BENEFITS

- 4000 PSI (276 Bar) rating.
- Continuous-duty solenoid.
- Hardened poppet and plunger for long life and low leakage.
- Efficient wet-armature construction.
- Cartridges are voltage interchangeable.
- Optional coil voltages and terminations.
- Filter screen standard.
- Low leak option available.
- Manual override option.
- Industry common cavity.
- Compact size.

SPECIFICATIONS

Operating Pressure: 4000 PSI (276 Bar)

Flow: See PRESSURE DROP VS. FLOW graph

Internal Leakage: 5 drops/min. max. at 4000 PSI (276 Bar)

Low leakage available-

Less than 2 drops/min. max. at 4000 PSI (276 Bar)

Temperature: -30° F to +250° F (-35°C to +120° C)

Coil Rating: [Continuous from 85% to 110% of rated voltage.](#)

Current Draw: 12 VDC is 1.3 amps.

Minimum Pull-In Voltage: 85% of rated voltage at 4000 PSI (276 Bar)

Response Time: 80% of final change of state with 100% voltage supplied at 100% of nominal flow rating.

Pull-In: 12 VDC 16 m. sec. **Drop-Out:** 12 VDC 18 m. sec.

Recommended Filtration: Critical Application-ISO 17/15/13

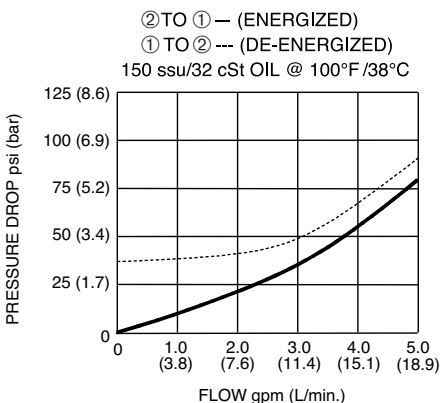
Non-Critical Application-ISO 20/18/14

Fluids: Mineral-based fluids. For other fluid compatibility consult factory.

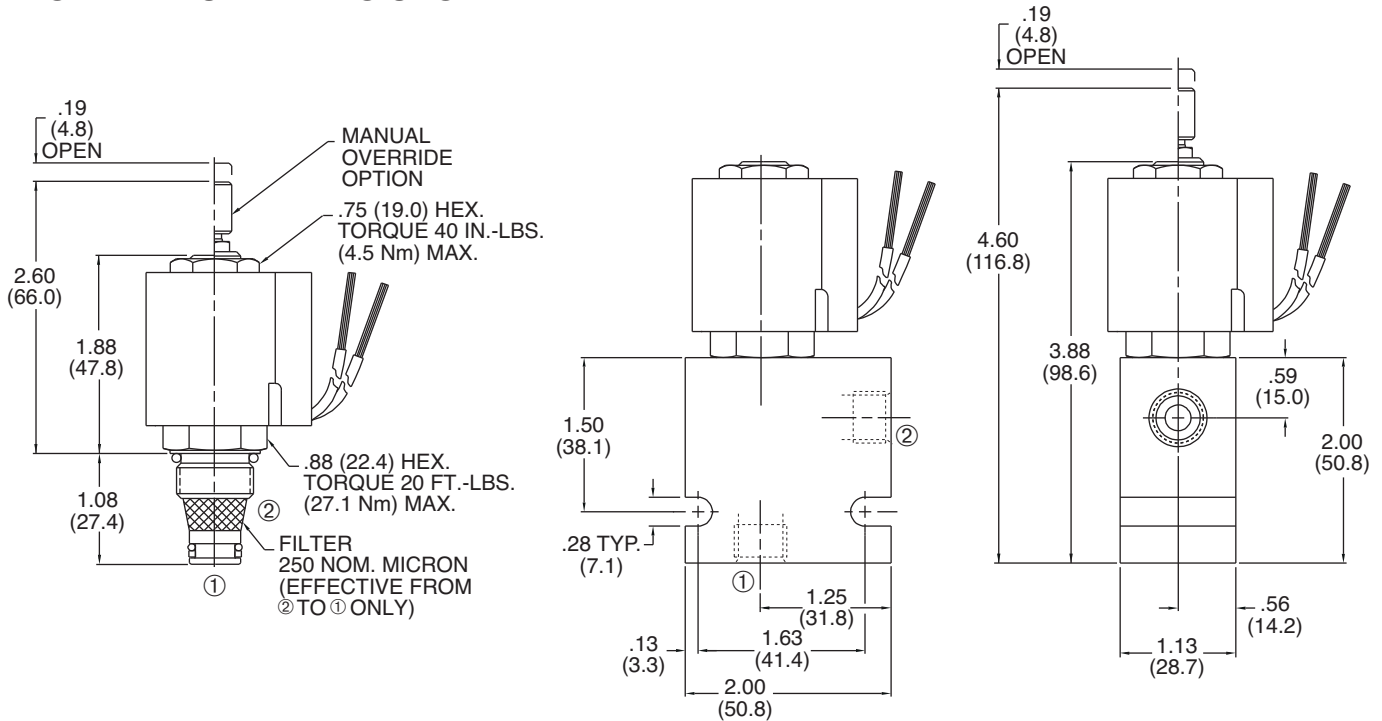
Cavity/Cavity Tool: [080-2, see page 11.08.2](#)

In-Line Body Material: Anodized 6061T6 aluminum
alloy rated at 3000 PSI (207 Bar).

PRESSURE DROP VS. FLOW



INSTALLATION DIMENSIONS



() Parentheses = Millimeters

HOW TO ORDER

DSV - 080 - 2 NC P - * - * * - * * * * - **

SOLENOID VALVE

CAVITY/SEAL

FLOW PATH

NORMALLY CLOSED

POPPET

SEALS

N = Buna N

V = Viton

M = Manual Override

(Omit for standard)

See page 1.01.3 for additional options.

L = Low Leak Option

(Omit for standard)

D = DC

A = AC

PORTING

2N = 1/4 PTF

3N = 3/8 PTF

4T = SAE 4

6T = SAE 6

Omit for Cartridge Only

COIL CONNECTION

DE = Double Lead

SE = Single Lead

HS = Hirschmann®

CS = Conduit

BE = Double Spade

EE = Single Stud

UE = Deutsch

VOLTAGE

1 = 12 Volt

2 = 24 Volt

5 = 120 Volt

6 = 240 Volt

9 = 20 Volt

10 = 10 Volt

Omit coil for cartridge only with nut.

Other porting and coil options available – consult factory.