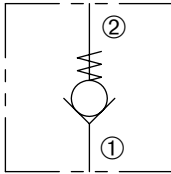


# ZC-62

Direct-Acting, Ball-Type  
Check Valve

## ZERO PROFILE

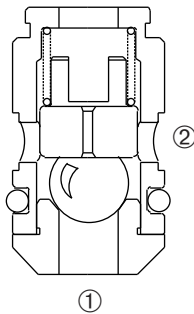


### DESCRIPTION

A cartridge valve designed to allow free flow in one direction, while preventing flow in the opposite direction. This valve is commonly used as a load-holding or blocking valve.

### OPERATION

Pressure at ① overcomes the spring-bias ball and allows free flow to ②. Flow in the opposite direction, from ② to ①, is blocked by the ball.



### FEATURES and BENEFITS

- Slip in style.
- Torlon® ball for positive shut-off.
- Low leak.
- Compact size.

### SPECIFICATIONS

**Operating Pressure:** 3000 PSI (207 Bar)

**Flow:** See PRESSURE DROP VS. FLOW graph.  
Nominal Flow 4 GPM (15.1 L/min).

**Internal Leakage:** 2 drops/min. max. at 3000PSI (207 Bar)

**Crack Pressure:** 5 PSI (0.3 Bar)  
30 PSI (2.1 Bar)

**Temperature:** -30°F to +250°F (-35°C to +120°C)

**Recommended Filtration:** Critical Application – ISO 17/15/13  
Non-Critical Application – ISO 20/18/14

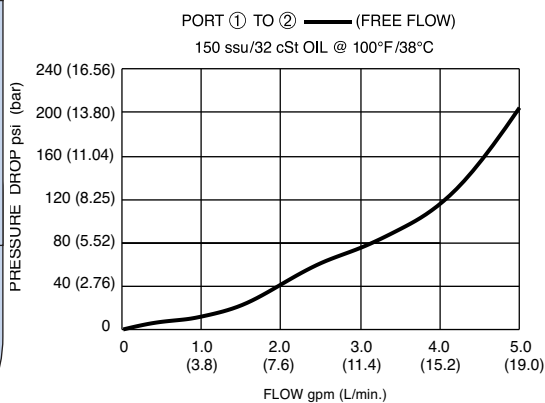
**Fluids:** Mineral-based fluids.

For other fluid compatibility, consult factory.

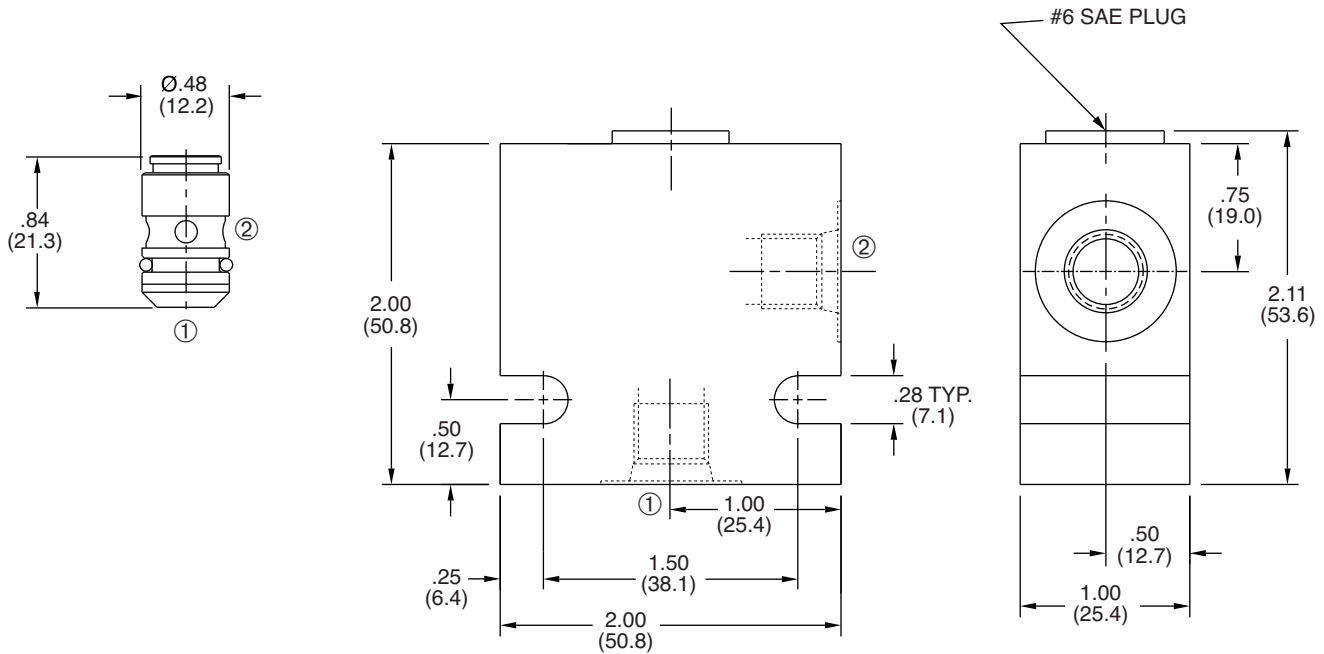
**Cavity/Cavity Tool:** ZP62, see page 11.06.2

**In-Line Body Material:** Anodized 6061T6 aluminum alloy rated at 3000 PSI (207 Bar).

### PRESSURE DROP VS. FLOW



**INSTALLATION DIMENSIONS**



( ) Parentheses = Millimeters

**HOW TO ORDER**

